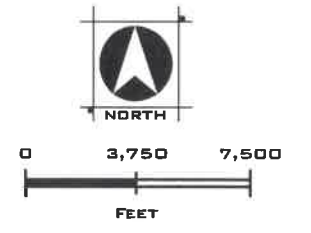
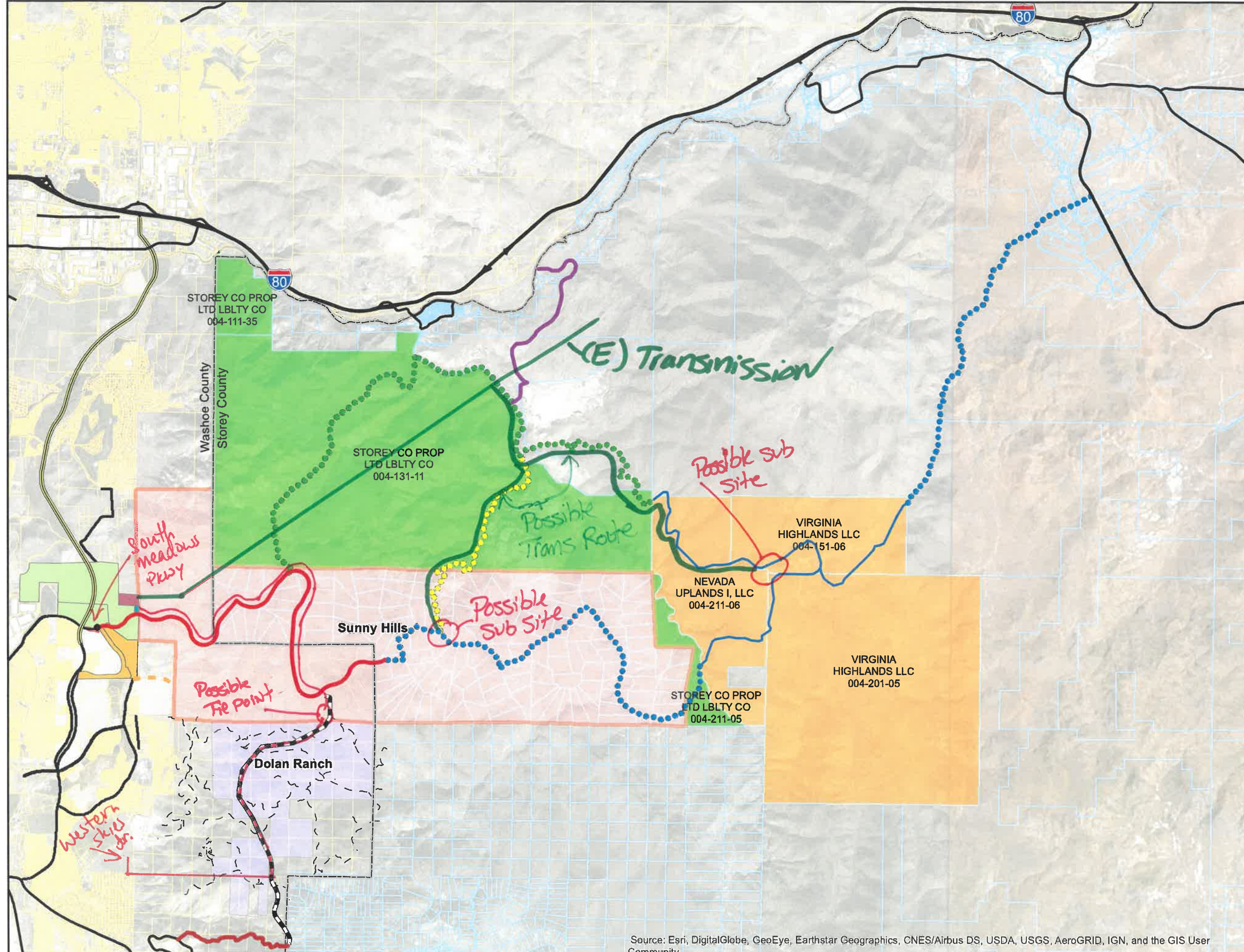


**FUTURE ACCESS ROAD OPTIONS
WASHOE / STOREY COUNTY
ROAD NETWORK
SEPTEMBER, 2017**



- Southeast Connector
 - Existing Road with Easement
 - 50' Access Easement per Doc. #4203612
 - Existing Roads
 - Existing Dirt Road
 - Storey County Limited Liability Company
 - Nevada Uplands
 - Washoe/Storey County Boundary
 - Dolan Ranch
 - Sunny Hills
 - Bella Vista Ranch Co LLC
 - Corona Cyan LLC
 - Sierra Pacific Power Company
 - Truckee Meadows Water Authority
- Regional Roads**
- Existing Landfill Road
 - Future South Meadows
 - Existing NV Upland
 - Future Access Road Option 1
 - Future Access Road Option 2
 - Future Access Road Option 3
 - Proposed Utility/Road Alignment



Source: Esri, DigitalGlobe, GeoEye, Earthstar Geographics, CNES/Airbus DS, USDA, USGS, AeroGRID, IGN, and the GIS User Community

PRELIMINARY



J:\Jobs\3417_Dolan_Ranch\GIS\Task\Roads_SouthMeadows_20170905_V1.mxd 9/6/2017 7:10:59 AM eford