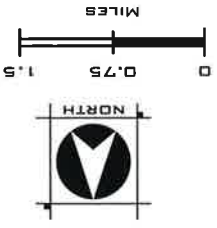
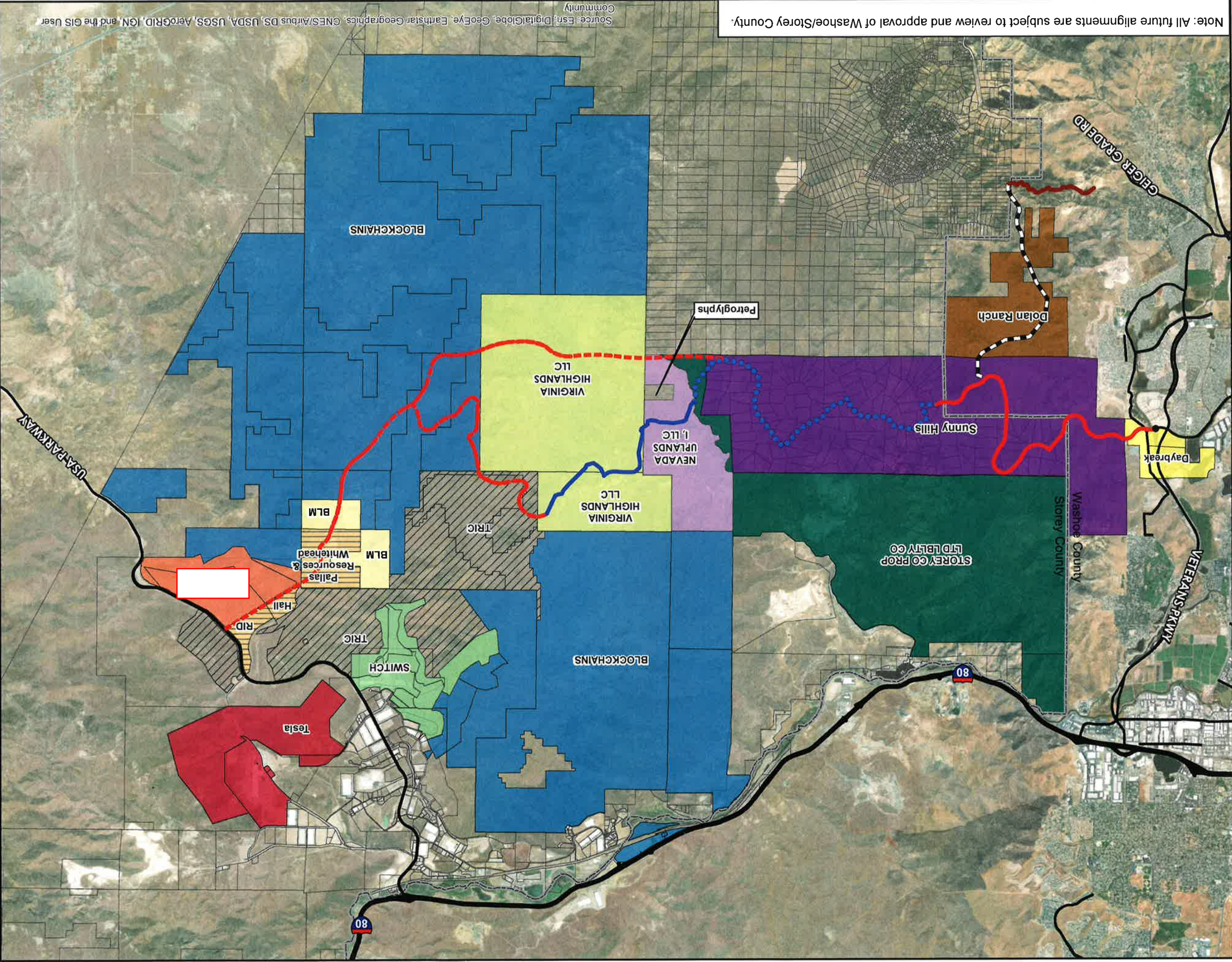


WASHOE/STOREY COUNTY
FUTURE ACCESS ROAD OPTIONS
WITH PROPERTY OWNERSHIP
OCTOBER, 2018



- Blockchains (Mass Land Acquisition LLC)
- Tesla
- Switch (Supernap)
- Google (Silver State LLC)
- TRIC
- BLM
- Property Owned by Others (See Map)
- Virginia Highlands LLC
- Storey County Limited Liability Company
- Nevada Uplands
- Dolan Ranch
- Sunny Hills
- Daybreak
- Washoe/Storey County Boundary
- Existing Roads
- Proposed Roads**
 - Future South Meadows
 - Existing NV Upland
 - Future Access Road
 - Potential Goose Berry Road Options
 - Proposed Utility/Road Alignment
 - Loftis Road



Note: All future alignments are subject to review and approval of Washoe/Storey County.

Source: Esri, DigitalGlobe, GeoEye, Earthstar Geographics, CNES/Airbus DS, USDA, USGS, AeroGRID, IGN, and the GIS User Community

PRELIMINARY

WOOD RODGERS
BUILDING RELATIONSHIPS ONE PROJECT AT A TIME
1381 Corporate Boulevard
Reno, NV 89502
Tel: 775.823.4068
Fax: 775.823.4066