

## Appendix B

# LONG VALLEY CREEK FLOOD MITIGATION STUDY

## STOREY COUNTY JANUARY 2024

15% DESIGN

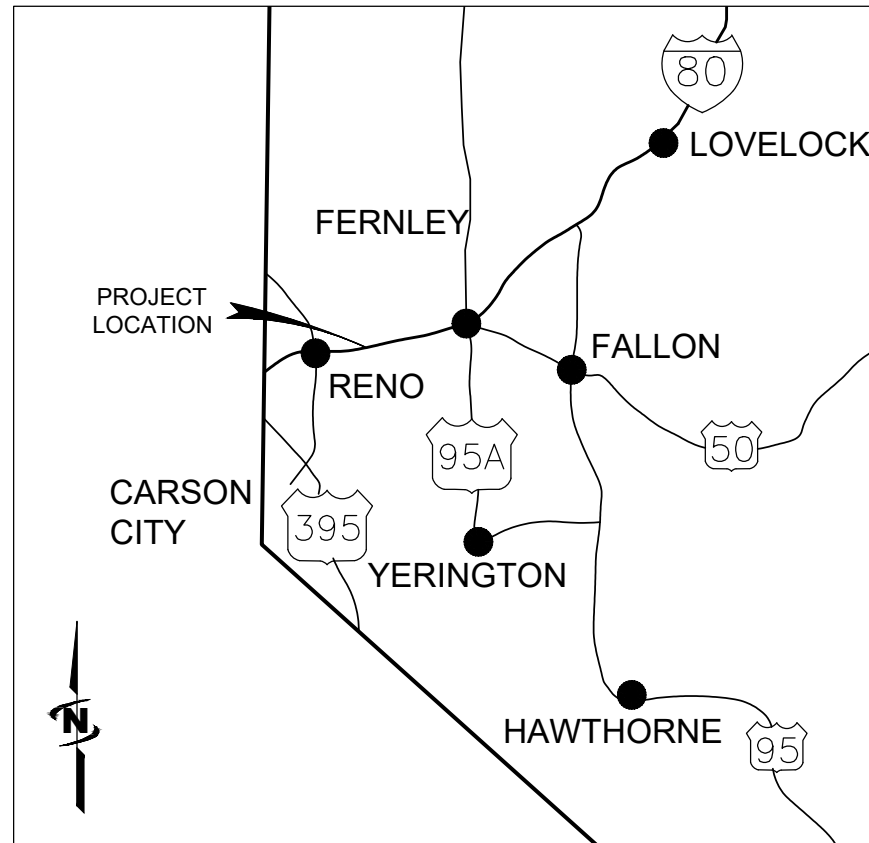
PRELIMINARY PLANS NOT FOR CONSTRUCTION

### OWNER:

STOREY COUNTY  
KATHY CANFIELD  
P.O. BOX 176, VIRGINIA CITY, NV 89440  
P:(775) 857-1144

### ENGINEER:

J-U-B ENGINEERS, INC.  
JEFF WEAGEL, PE  
5190 NEIL ROAD, SUITE 500, RENO, NV  
P:(775) 852-1440



AREA MAP N.T.S.



PROJECT NO. 49-23-004



J-U-B ENGINEERS, INC.



THE  
LANGDON  
GROUP



GATEWAY  
MAPPING  
INC.

J-U-B FAMILY OF COMPANIES

### Sheet List Table

Sheet Number	Sheet Title
G-001	COVER SHEET
G-002	LEGENDS AND ABBREVIATIONS
C-100	MAP INDEX
C-101	SOUTH CANYON WAY BRIDGE REMOVAL AND EXCAVATION
C-102	NORTH CANYON WAY BRIDGE REPLACEMENT AND CHANNEL LINING
C-103	PERI RANCH ROACH BRIDGE REPLACEMENT AND CHANNEL LINING
C-104	CERCLE DE CERESE BRIDGE REPLACEMENT AND CHANNEL LINING
C-105	AVENUE DE LA COULEURS BRIDGE REPLACEMENT AND CHANNEL LINING

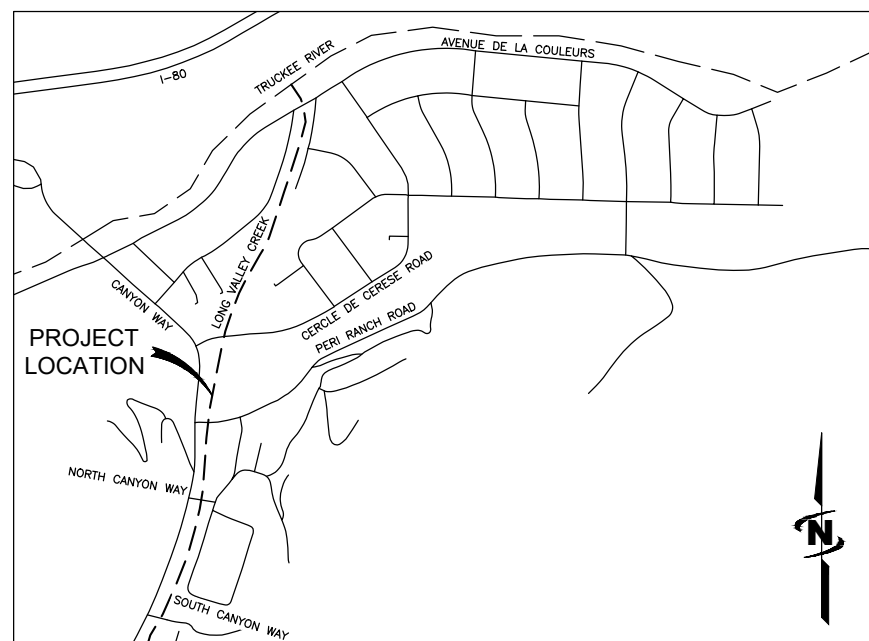
### REUSE OF DOCUMENTS

J-U-B grants to CLIENT a nonexclusive, non-transferable license to use the Drawings, Specifications and/or Contract Documents (Documents) as follows:

CLIENT may make and retain copies of the Documents for reference, but J-U-B shall retain all common law, statutory and other reserved rights, including the copyright thereto, and the same shall not be reused on this Project or any other Project without J-U-B's prior written consent. Distribution of Documents to meet regulatory or permitting requirements, or for similar purposes, in connection with the Project, including but not limited to distribution to contractors or subcontractors for the performance of their work, is not to be construed as publication adversely affecting the reserved rights of J-U-B. The Documents are not intended for use in creating dtm for grading or earthwork, survey staking layout (unless specifically identified as such in the documents), or property boundary layouts.

Any reuse without written consent by J-U-B, or without verification or adoption by J-U-B for the specific purpose intended by the reuse, will be at CLIENT's sole risk and without liability or legal exposure to J-U-B. The CLIENT shall release, defend, indemnify, and hold J-U-B harmless from any claims, damages, actions or causes of action, losses, and expenses, including reasonable attorneys' and expert fees, arising out of or resulting from such reuse.

If the Documents are provided in electronic format, the electronic documents are subject to the provisions of J-U-B's "electronic document/data limited license" found at edocs.jub.com



VICINITY MAP N.T.S.



J-U-B ENGINEERS, INC.

J-U-B ENGINEERS, INC.  
5190 Neil Road  
Suite 500  
Reno, NV 89502  
Phone: 775.852.1440  
www.jub.com

PRELIMINARY  
PLANS

NOT FOR  
CONSTRUCTION

REUSE OF DRAWINGS  
JUB SHALL RETAIN ALL COMMON LAW, STATUTORY, COPYRIGHT AND OTHER RIGHTS IN THIS DRAWING. THIS DRAWING IS THE PROPERTY OF JUB AND SHALL NOT BE REUSED, REPRODUCED, COPIED, OR TRANSMITTED IN ANY FORM OR BY ANY MEANS, WITHOUT THE WRITTEN CONSENT OF JUB. ANY REUSE WITHOUT WRITTEN CONSENT BY JUB WILL BE AT CLIENT'S SOLE RISK AND WITHOUT LIABILITY OR LEGAL EXPOSURE TO JUB.

NO.	REVISION	DESCRIPTION	BY	DATE

LONG VALLEY CREEK FLOOD MITIGATION STUDY  
STOREY COUNTY

LEGENDS AND ABBREVIATIONS

FILE: 49-23-004\_G-001X  
JUB PROJ. #: 49-23-004  
DRAWN BY: ALM  
DESIGN BY: CWH  
CHECKED BY: JAW

ONE INCH  
AT FULL SIZE. IF NOT ONE  
INCH, SCALE ACCORDINGLY

LAST UPDATED: 1/11/2024

SHEET NUMBER:

G-002

### LINE LEGEND

LINE DESCRIPTION	PROPOSED LINE	EXISTING LINE
<b>POWER / COMMUNICATIONS</b>		
OVERHEAD POWER	—OHP—	--- OHP ---
<b>WATER</b>		
POTABLE WATER	— W —	--- W ---
RECLAIMED WATER	— REW —	--- REW ---
SANITARY SEWER	— SS —	--- SS ---
<b>IRRIGATION</b>		
IRRIGATION	— IRR —	--- IRR ---
<b>GAS</b>		
NATURAL GAS	— G —	--- G ---
<b>SITE</b>		
EDGE OF PAVEMENT	— — — — —	--- EP ---
MAJOR CONTOUR	— — — — —	--- ---
MINOR CONTOUR	— — — — —	--- ---
GRADE	— — — — —	--- ---
FENCE	— X —	--- X ---

### SYMBOL LEGEND

SYMBOL DESCRIPTION	EXISTING SYMBOL	PROPOSED SYMBOL
<b>ELECTRIC</b>		
POWER POLE	⊕	⊖
<b>WATER</b>		
SANITARY SEWER MANHOLE	Ⓢ	N/A

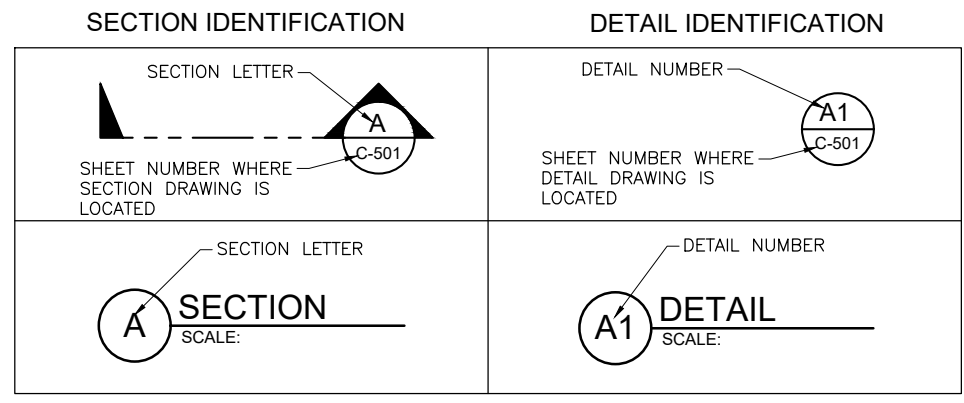
### ABBREVIATIONS

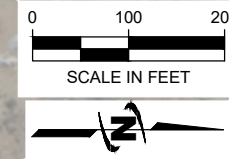
APPROX.	APPROXIMATE
BLDG	BUILDING
Ⓢ	CENTER LINE
EX.	EXISTING
P.I.P.	PROTECT IN PLACE
PR.	PROPOSED
TYP.	TYPICAL

### HATCH LEGEND

	PR. ROADWAY BRIDGE
	EX. ROADWAY BRIDGE
	EMBANKMENT REMOVAL
	PR. RIPRAP

### SECTION AND DETAIL IDENTIFIERS





J-U-B ENGINEERS, INC.  
 5190 Neil Road  
 Suite 500  
 Reno, NV 89502  
 Phone: 775.852.1440  
 www.jub.com

PRELIMINARY  
 PLANS  
 NOT FOR  
 CONSTRUCTION

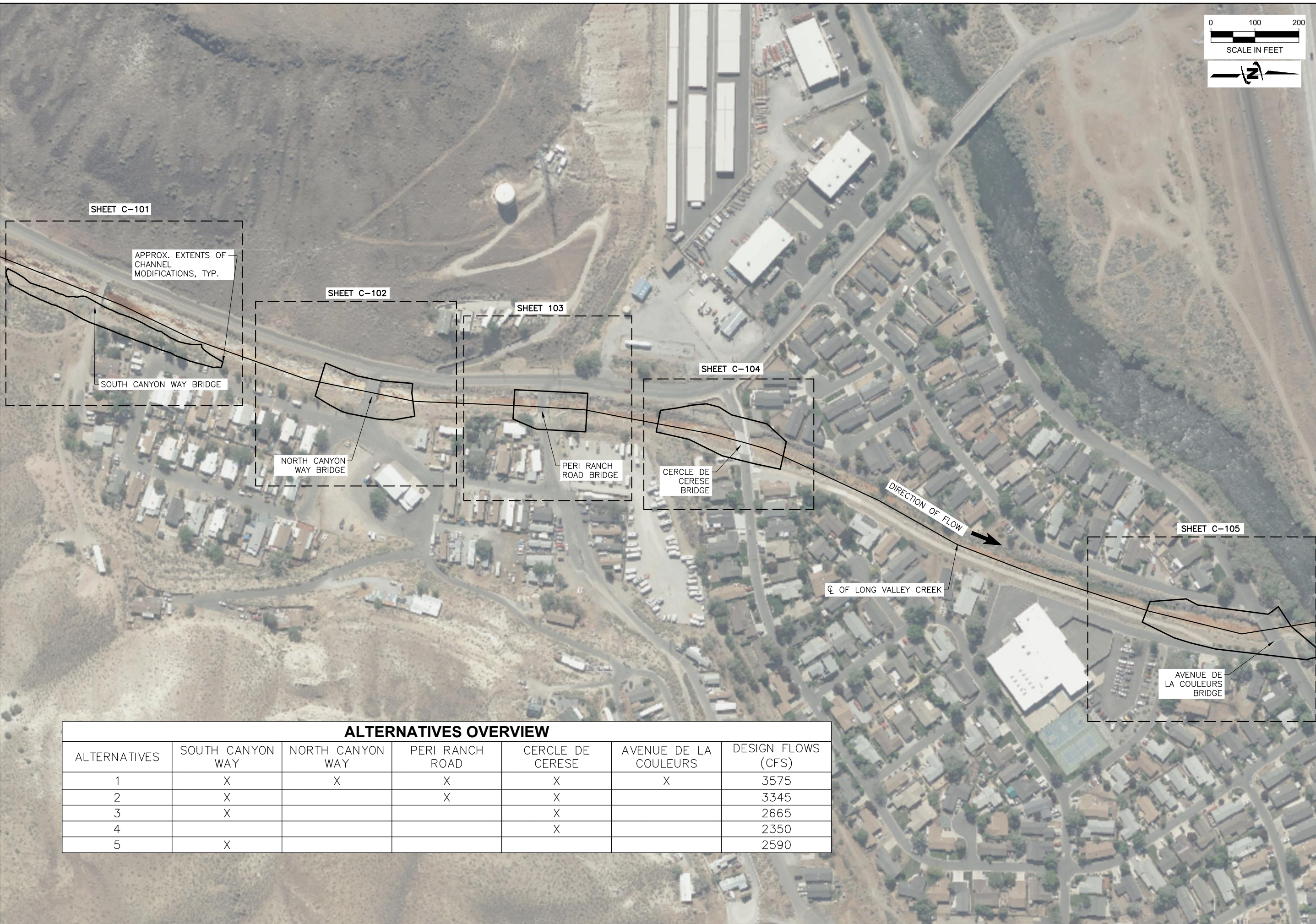
REUSE OF DRAWINGS  
 JUB SHALL RETAIN ALL COMMON LAW, STATUTORY, COPYRIGHT AND OTHER RIGHTS IN THIS DRAWING. NO PART OF THIS DRAWING SHALL BE REPRODUCED OR TRANSMITTED IN ANY FORM OR BY ANY MEANS, ELECTRONIC OR MECHANICAL, INCLUDING PHOTOCOPYING, RECORDING, OR BY ANY INFORMATION STORAGE AND RETRIEVAL SYSTEM, WITHOUT THE WRITTEN CONSENT OF JUB. ANY REUSE WITHOUT WRITTEN CONSENT BY JUB WILL BE AT CLIENT'S SOLE RISK AND WITHOUT LIABILITY OR LEGAL EXPOSURE TO JUB.

NO.	REVISION	DESCRIPTION	BY	DATE

LONG VALLEY CREEK FLOOD MITIGATION STUDY  
 STOREY COUNTY  
 MAP INDEX

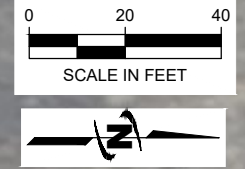
FILE: 49-23-004\_C-101X  
 JUB PROJ. #: 49-23-004  
 DRAWN BY: SBC  
 DESIGN BY: SBC  
 CHECKED BY: JAW  
 AT FULL SIZE, IF NOT ONE  
 INCH SCALE ACCORDINGLY  
 LAST UPDATED: 1/11/2024  
 SHEET NUMBER:  
**C-100**

Plot Date: 1/11/2024 11:34 AM Plotted By: Sierra Clark  
 Date Created: 1/11/2024 JUB\COM\CENTRAL\Clients\STOREY COUNTY\PROJECTS\49-23-004 LONG VALLEY CREEK\STUDY\DESIGN\CAD\SHEET\49-23-004\_C-101X.DWG



**ALTERNATIVES OVERVIEW**

ALTERNATIVES	SOUTH CANYON WAY	NORTH CANYON WAY	PERI RANCH ROAD	CERCLE DE CERESE	AVENUE DE LA COULEURS	DESIGN FLOWS (CFS)
1	X	X	X	X	X	3575
2	X		X	X		3345
3	X			X		2665
4				X		2350
5	X					2590



**JUB ENGINEERS, INC.**  
 5190 Neil Road  
 Suite 500  
 Reno, NV 89502  
 Phone: 775.852.1440  
 www.jub.com

**PRELIMINARY PLANS**  
**NOT FOR CONSTRUCTION**

REUSE OF DRAWINGS  
 JUB SHALL RETAIN ALL COMMON LAW, STATUTORY, COPYRIGHT AND TRADEMARK RIGHTS IN THIS DRAWING. NO PART OF THIS DRAWING SHALL BE REPRODUCED OR TRANSMITTED IN ANY FORM OR BY ANY MEANS, ELECTRONIC OR MECHANICAL, INCLUDING PHOTOCOPYING, RECORDING, OR BY ANY INFORMATION STORAGE AND RETRIEVAL SYSTEM, WITHOUT THE WRITTEN CONSENT OF JUB. ANY REUSE WITHOUT WRITTEN CONSENT BY JUB WILL BE AT CLIENT'S SOLE RISK AND WITHOUT LIABILITY OR LEGAL EXPOSURE TO JUB.

NO.	REVISION	DESCRIPTION	BY	DATE

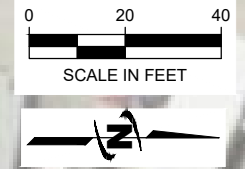
**LONG VALLEY CREEK FLOOD MITIGATION STUDY**  
**STOREY COUNTY**  
**SOUTH CANYON WAY BRIDGE REMOVAL AND EXCAVATION**

FILE: 49-23-004\_C-101X  
 JUB PROJ. #: 49-23-004  
 DRAWN BY: SBC  
 DESIGN BY: SBC  
 CHECKED BY: JAW  
 AT FULL SIZE, IF NOT ONE INCH SCALE ACCORDINGLY  
 LAST UPDATED: 1/11/2024  
**SHEET NUMBER:**  
**C-101**

Plot Date: 1/11/2024 11:34 AM Plotted By: Sierra Clark  
 Date Created: 1/11/2024 JUB\COM\CENTRAL\Clients\STOREY\COUNTY\PROJECTS\49-23-004 LONG VALLEY CREEK\STUDY\DESIGN\CAD\SHEET\49-23-004\_C-101X.DWG



- NOTES**
1. THESE IMPROVEMENTS ARE INCLUDED IN ALTERNATIVES 1, 2, 3, AND 5.
  2. APPROX. LOCATIONS OF EX. UTILITIES ARE SHOWN. THEY ARE TO BE USED FOR GENERAL INFORMATION ONLY.



**JUB ENGINEERS, INC.**  
 5190 Neil Road  
 Suite 500  
 Reno, NV 89502  
 Phone: 775.852.1440  
 www.jub.com

**PRELIMINARY PLANS**  
**NOT FOR CONSTRUCTION**

REUSE OF DRAWINGS  
 JUB SHALL RETAIN ALL COMMON LAW, STATUTORY, COPYRIGHT AND OTHER RIGHTS IN THIS DRAWING. NO PART OF THIS DRAWING SHALL BE REPRODUCED OR TRANSMITTED IN ANY FORM OR BY ANY MEANS, ELECTRONIC OR MECHANICAL, INCLUDING PHOTOCOPYING, RECORDING, OR BY ANY INFORMATION STORAGE AND RETRIEVAL SYSTEM, WITHOUT THE WRITTEN CONSENT OF JUB. ANY REUSE WITHOUT WRITTEN CONSENT BY JUB WILL BE AT CLIENT'S SOLE RISK AND WITHOUT LIABILITY OR LEGAL EXPOSURE TO JUB.

NO.	REVISION	DESCRIPTION	BY	DATE

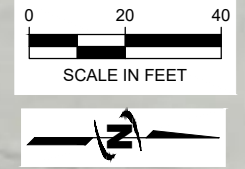
**LONG VALLEY CREEK FLOOD MITIGATION STUDY**  
**STOREY COUNTY**  
**NORTH CANYON WAY BRIDGE REPLACEMENT AND CHANNEL LINING**

FILE: 49-23-004\_C-101X  
 JUB PROJ. #: 49-23-004  
 DRAWN BY: SBC  
 DESIGN BY: SBC  
 CHECKED BY: JAW  
 AT FULL SIZE, IF NOT ONE INCH SCALE ACCORDINGLY  
 LAST UPDATED: 1/11/2024  
 SHEET NUMBER:  
**C-102**

Plot Date: 1/11/2024 11:34 AM Plotted By: Sierra Clark  
 Date Created: 1/11/2024 JUB\COM\CENTRAL\Clients\STOREY\COUNTY\PROJECTS\49-23-004 LONG VALLEY CREEK\STUDY\DESIGN\CAD\SHEET\49-23-004\_C-101X.DWG

- NOTES**
1. THESE IMPROVEMENTS ARE INCLUDED IN ALTERNATIVE 1.
  2. APPROX. LOCATIONS OF EX. UTILITIES ARE SHOWN. THEY ARE TO BE USED FOR GENERAL INFORMATION ONLY.





**JUB ENGINEERS, INC.**  
 5190 Neil Road  
 Suite 500  
 Reno, NV 89502  
 Phone: 775.852.1440  
 www.jub.com

**PRELIMINARY PLANS**  
**NOT FOR CONSTRUCTION**

REUSE OF DRAWINGS

JUB SHALL RETAIN ALL COMMON LAW, STATUTORY, COPYRIGHT AND OTHER RIGHTS IN THIS DRAWING. NO PART OF THIS DRAWING SHALL BE REPRODUCED OR TRANSMITTED IN ANY FORM OR BY ANY MEANS, ELECTRONIC OR MECHANICAL, INCLUDING PHOTOCOPYING, RECORDING, OR BY ANY INFORMATION STORAGE AND RETRIEVAL SYSTEM, WITHOUT THE WRITTEN CONSENT OF JUB. ANY REUSE WITHOUT WRITTEN CONSENT BY JUB WILL BE AT CLIENTS' SOLE RISK AND WITHOUT LIABILITY OR LEGAL EXPOSURE TO JUB.

NO.	REVISION	DESCRIPTION	BY	DATE

**LONG VALLEY CREEK FLOOD MITIGATION STUDY**  
**STOREY COUNTY**  
**PERI RANCH ROACH BRIDGE REPLACEMENT AND CHANNEL LINING**

FILE: 49-23-004\_C-103X  
 JUB PROJ. #: 49-23-004  
 DRAWN BY: SBC  
 DESIGN BY: SBC  
 CHECKED BY: JAW  
 AT FULL SIZE, IF NOT ONE INCH SCALE ACCORDINGLY  
 LAST UPDATED: 1/11/2024  
 SHEET NUMBER:  
**C-103**



**NOTES**

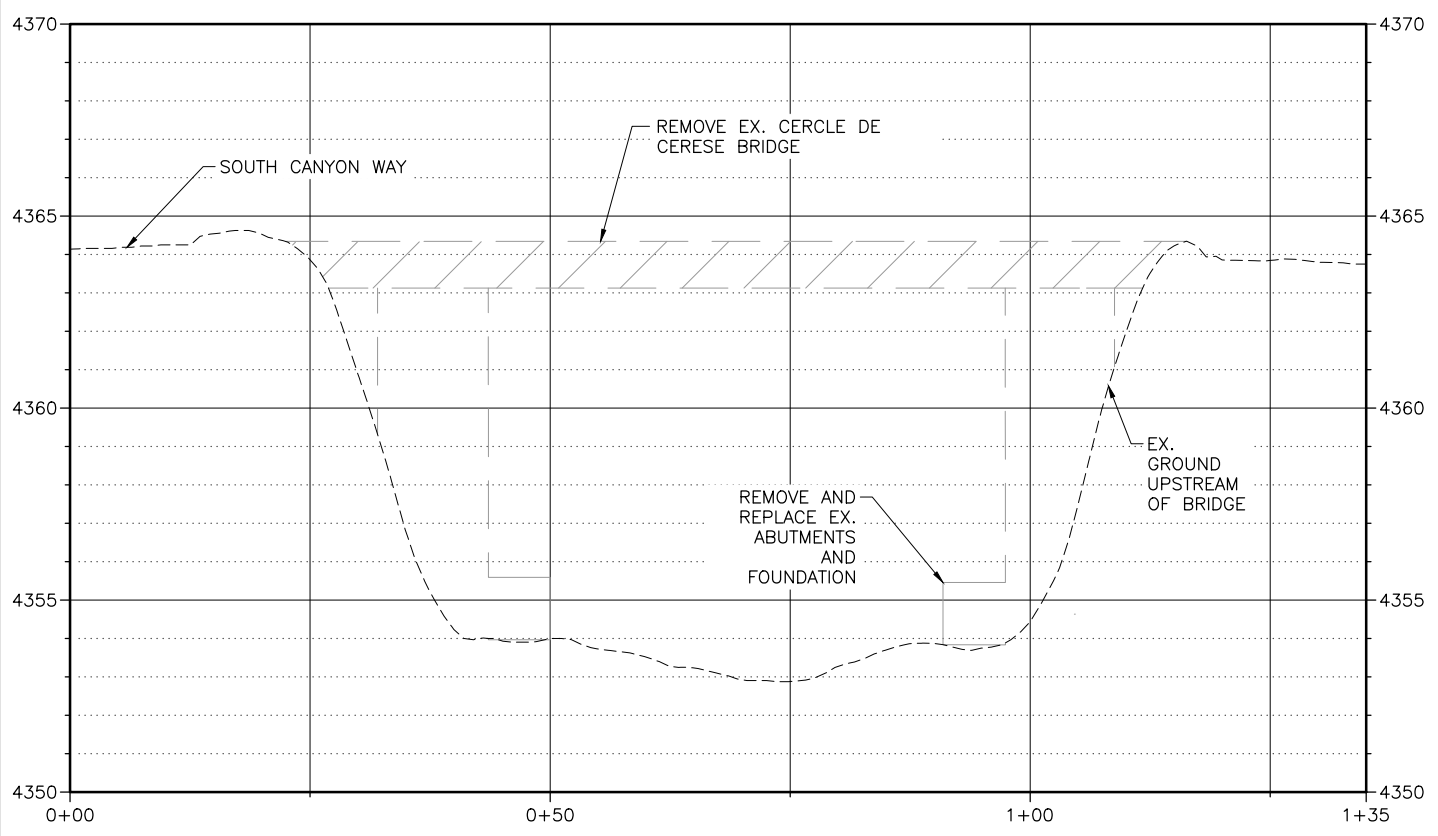
1. THESE IMPROVEMENTS ARE INCLUDED IN ALTERNATIVES 1 AND 2.
2. APPROX. LOCATIONS OF EX. UTILITIES ARE SHOWN. THEY ARE TO BE USED FOR GENERAL INFORMATION ONLY.

Plot Date: 1/11/2024 11:34 AM Plotted By: Sierra Clark  
 Date Created: 1/11/2024 JUB\COM\CENTRAL\CLIENTS\STOREY\COUNTY\PROJECTS\49-23-004\LONG VALLEY CREEK\STUDY\DESIGN\CAD\SHEET\49-23-004\_C-103.DWG

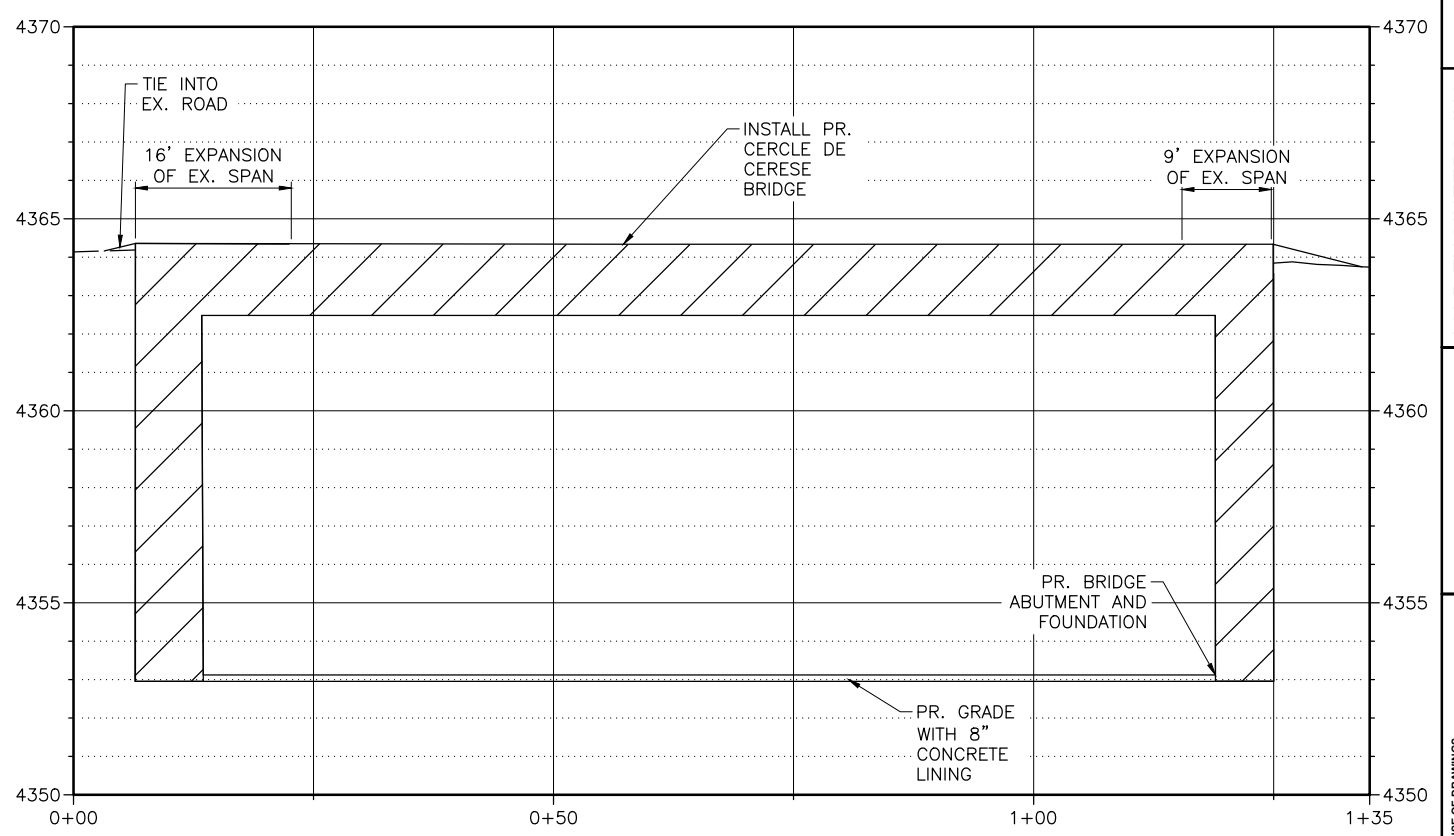
REUSE OF DRAWINGS

JUB SHALL RETAIN ALL COMMON LAW, STATUTORY, COPYRIGHT AND OTHER RIGHTS IN THIS DRAWING. NO PART OF THIS DRAWING SHALL BE REPRODUCED OR TRANSMITTED IN ANY FORM OR BY ANY MEANS, ELECTRONIC OR MECHANICAL, INCLUDING PHOTOCOPYING, RECORDING, OR BY ANY INFORMATION STORAGE AND RETRIEVAL SYSTEM, WITHOUT THE WRITTEN CONSENT OF JUB. ANY REUSE WITHOUT WRITTEN CONSENT BY JUB WILL BE AT CLIENT'S SOLE RISK AND WITHOUT LIABILITY OR LEGAL EXPOSURE TO JUB.

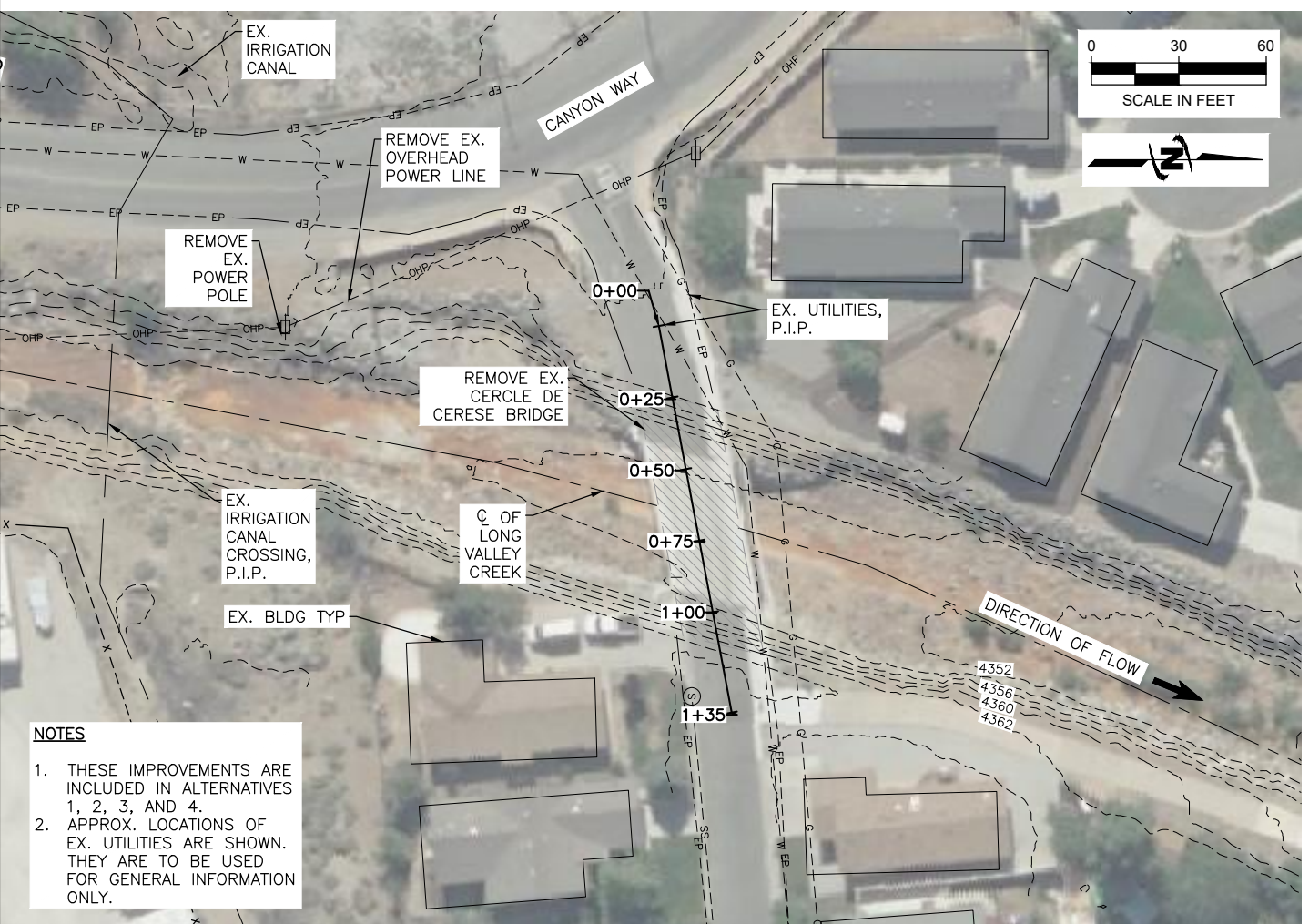
NO.	REVISION	DESCRIPTION	BY	DATE



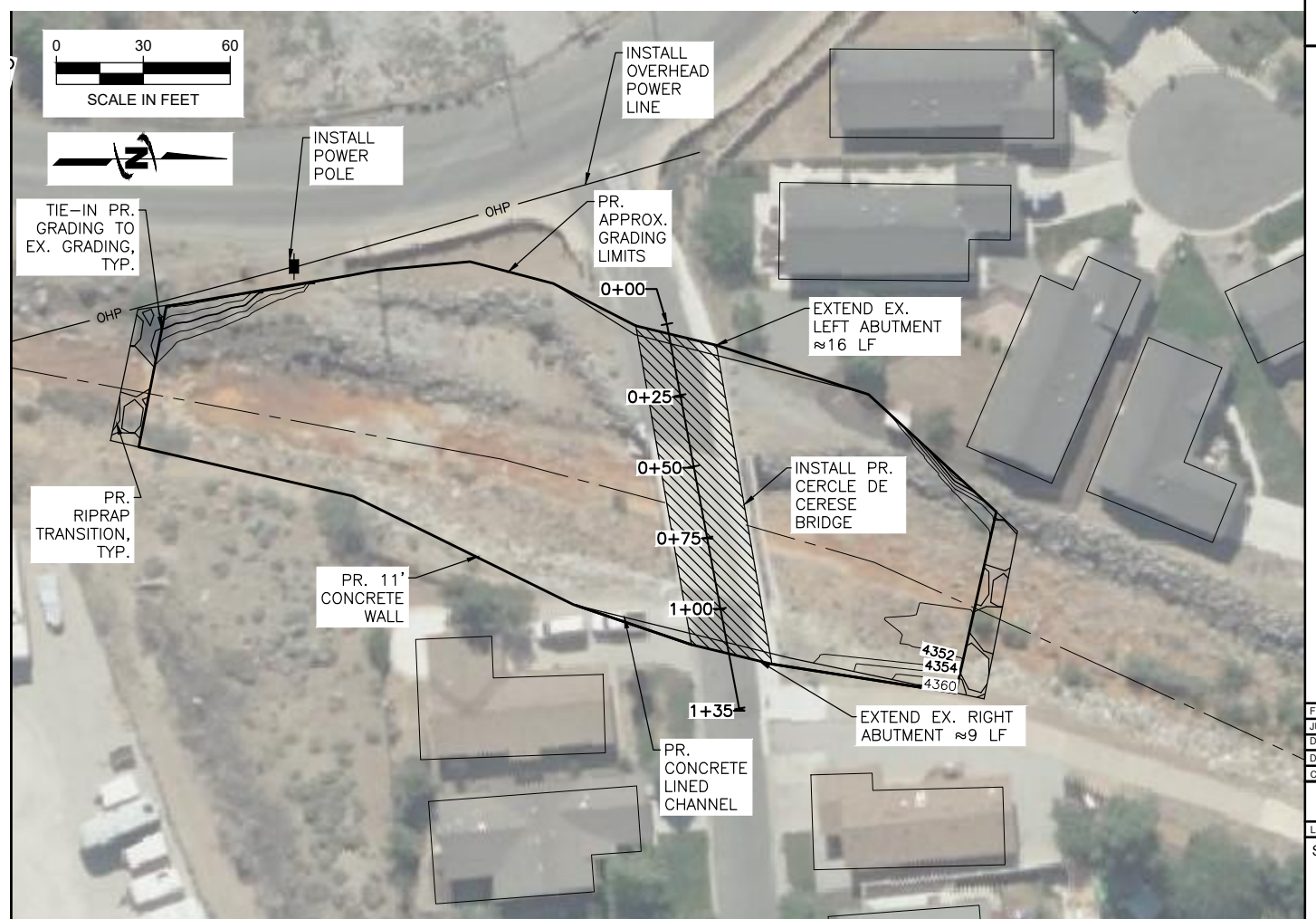
**EX. CERCLE DE CERESE BRIDGE PROFILE**  
SCALE: 1:20H 1:5V



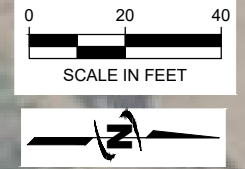
**PR. CERCLE DE CERESE BRIDGE PROFILE**  
SCALE: 1:20H 1:5V



- NOTES**
1. THESE IMPROVEMENTS ARE INCLUDED IN ALTERNATIVES 1, 2, 3, AND 4.
  2. APPROX. LOCATIONS OF EX. UTILITIES ARE SHOWN. THEY ARE TO BE USED FOR GENERAL INFORMATION ONLY.



Plot Date: 1/11/2024 11:34 AM Plotted By: Sierra Clark  
 Date Created: 1/11/2024 JUB: C:\CENTRAL\Clients\STOREY COUNTY\PROJECTS\49-23-004 LONG VALLEY CREEK STUDY\DESIGN\CAD\SHEET\49-23-004\_C-101X.DWG



**JUB ENGINEERS, INC.**  
 5190 Neil Road  
 Suite 500  
 Reno, NV 89502  
 Phone: 775.852.1440  
 www.jub.com

**PRELIMINARY PLANS**  
**NOT FOR CONSTRUCTION**

REUSE OF DRAWINGS  
 JUB SHALL RETAIN ALL COMMON LAW, STATUTORY, COPYRIGHT, AND OTHER RIGHTS IN THIS DRAWING. NO PART OF THIS DRAWING SHALL BE REPRODUCED OR TRANSMITTED IN ANY FORM OR BY ANY MEANS, ELECTRONIC OR MECHANICAL, INCLUDING PHOTOCOPYING, RECORDING, OR BY ANY INFORMATION STORAGE AND RETRIEVAL SYSTEM, WITHOUT THE WRITTEN CONSENT OF JUB. ANY REUSE WITHOUT WRITTEN CONSENT BY JUB WILL BE AT CLIENTS' SOLE RISK AND WITHOUT LIABILITY OR LEGAL EXPOSURE TO JUB.

NO.	REVISION	DESCRIPTION	BY	DATE

**LONG VALLEY CREEK FLOOD MITIGATION STUDY**  
**STOREY COUNTY**  
**AVENUE DE LA COULEURS BRIDGE**  
**REPLACEMENT AND CHANNEL LINING**

FILE: 49-23-004\_C-101X  
 JUB PROJ. #: 49-23-004  
 DRAWN BY: SBC  
 DESIGN BY: SBC  
 CHECKED BY: JAW  
 AT FULL SIZE, IF NOT ONE INCH SCALE ACCORDINGLY  
 LAST UPDATED: 1/11/2024  
 SHEET NUMBER:  
**C-105**

Plot Date: 1/11/2024 11:34 AM Plotted By: Sierra Clark  
 Date Created: 1/11/2024 JUB\CENTRAL\Clients\STOREY COUNTY\PROJECTS\49-23-004 LONG VALLEY CREEK STUDY\DESIGN\CAD\SHEET\49-23-004\_C-101X.DWG



- NOTES**
1. THESE IMPROVEMENTS ARE INCLUDED IN ALTERNATIVE 1.
  2. APPROX. LOCATIONS OF EX. UTILITIES ARE SHOWN. THEY ARE TO BE USED FOR GENERAL INFORMATION ONLY.