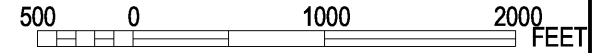


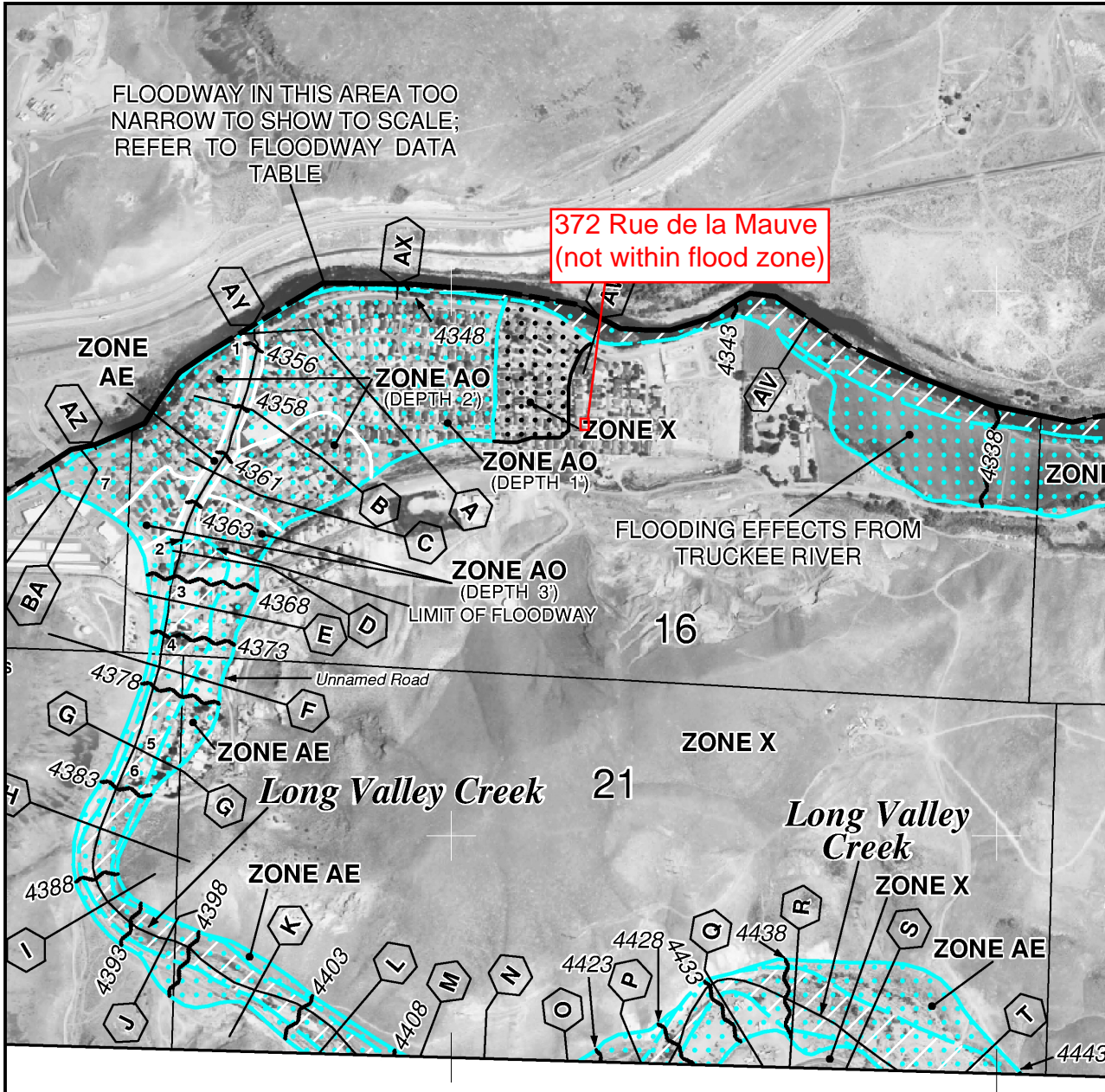


MAP SCALE 1" = 1000'



FLOODWAY IN THIS AREA TOO NARROW TO SHOW TO SCALE; REFER TO FLOODWAY DATA TABLE

372 Rue de la Mauve
(not within flood zone)



NFIP

PANEL 0045D

FIRM
FLOOD INSURANCE RATE MAP
STOREY COUNTY,
NEVADA
AND INCORPORATED AREAS

PANEL 45 OF 300
(SEE MAP INDEX FOR FIRM PANEL LAYOUT)

CONTAINS:

COMMUNITY	NUMBER	PANEL	SUFFIX
STOREY COUNTY	320033	0045	D

Notice to User: The Map Number shown below should be used when placing map orders; the Community Number above should be used on insurance applications for the subject community.



MAP NUMBER
32029C0045D
EFFECTIVE DATE
JANUARY 16, 2009

Federal Emergency Management Agency