

**FINAL DRAFT**

# **Dayton Valley Development Guidelines**

Supplement to the Dayton Valley Area Drainage Master Plan



**August  
2019**

prepared for  
Lyon County | Storey County |  
Carson Water Subconservancy District

**Table of Contents**

1 Introduction ..... 1

1.1 Background and Rationale ..... 3

1.1.1 More Frequent Flooding ..... 3

1.1.2 Larger Flood Peaks ..... 3

1.1.3 Scour and Erosion ..... 3

1.1.4 Flow Diversion..... 3

1.1.5 Flow Concentration..... 3

1.1.6 Expanded Floodplains ..... 3

1.1.7 Reduced Surface Storage ..... 3

1.1.8 Decreased Ground Water Recharge ..... 4

1.1.9 Loss of Riparian Habitat ..... 4

1.2 Objectives..... 4

1.3 Authority ..... 5

1.3.1 National Flood Insurance Program ..... 5

1.3.2 Nevada Revised Statutes..... 5

1.3.3 Local Drainage Regulations ..... 5

1.3.4 Local Jurisdiction Hazard Mitigation Plan Documents:..... 5

2 Development Guidelines..... 6

2.1 Floodplains and Special Consideration Areas ..... 6

2.1.1 General Considerations..... 6

2.2 Riverine Flooding ..... 8

2.3 Distributary and Split Flow Areas..... 9

2.3.1 Hazard Description..... 9

2.3.2 Definitions ..... 11

2.3.3 Technical References: ..... 11

2.3.4 Development guidelines for Distributary & Split Flow Areas ..... 12

2.4 Alluvial Fans ..... 12

2.4.1 Hazard Description..... 12

2.4.2 Definitions ..... 14

2.4.3 Types of Alluvial Fans ..... 14

2.4.4 Technical References: ..... 15

2.4.5 Development guidelines for Alluvial Fans..... 15

2.5 Sheet Flooding ..... 17

2.5.1 Hazard Description..... 17

2.5.2 Definitions ..... 19

2.5.3 Types of Sheet Flow ..... 19

2.5.4 Technical References: ..... 20

2.5.5 Development Guidelines for Sheet Flow Areas ..... 20

**List of Figures**

Figure 1-1. Dayton Valley ADMP focus area and contributing watershed ..... 2

Figure 2-1. Flooding hazard types ..... 7

Figure 2-2. Example of tributary (dendric) drainage pattern..... 8

Figure 2-3. Example of riverine flooding in the ADMP study area..... 8

Figure 2-4. 100-Year, 24-Hour storm discharge results illustrating the highly distributary nature of the ADMP study area. .... 10

Figure 2-5. Sixmile Canyon is one of several active alluvial fan landforms within the ADMP study area. 13

Figure 2-6. Example of sheet flooding (red outline) within the ADMP study area..... 18

# 1 INTRODUCTION

---

Natural environmental hazards associated with drainage and storm water runoff exist in all watersheds. Development can adversely affect natural drainage and create flood and erosion hazards, unless adequate planning and management rules are applied. To protect private and public property, and the health and general welfare of the public, naturally occurring drainage hazards and potential hazards related to development need to be identified, and appropriate development standards applied to manage new development.

The Dayton Valley Area Drainage Master Plan (ADMP) identifies certain drainage hazards for the watersheds in the study area. The development guidelines outlined in this document are a non-structural component of an overall comprehensive flood hazard management plan. Other flood mitigation strategies may be implemented by developers or agencies, such as flood warning systems, at-risk property acquisition, or structural flood control measures. The development guidelines identify drainage issues, recommend development practices, identify required engineering analysis, and describe best management practices for floodplain management and drainage engineering. Figure 1-1 shows the focus area of the Dayton Valley ADMP and the contributing watershed.

Implementation of development guidelines for drainage hazards has been shown to reduce public expenditures for structural flood control measures, decrease the level of maintenance needed for flood control facilities, and lessen the need for acquisition of public right-of-way for flood control. In addition, application of development guidelines reduces the potential for flood damage to private and public property and reduces the need for public funding for flood mitigation.

The guidelines presented in this document are intended to be used by the County agencies as a tool in assessing the flooding risk impacts of future small- (individual lot) and large- (master planned community) scale development. The policies presented in the guidelines are intended to be used by the County agencies at their discretion when deemed warranted during the permit review process. The guidelines are intended to be used concurrently with data from the ADMP to determine existing conditions flood risk, and appropriate mitigation procedures. The guidelines are also intended to assist the County agencies in determining when additional engineering analyses are needed for future development approval.

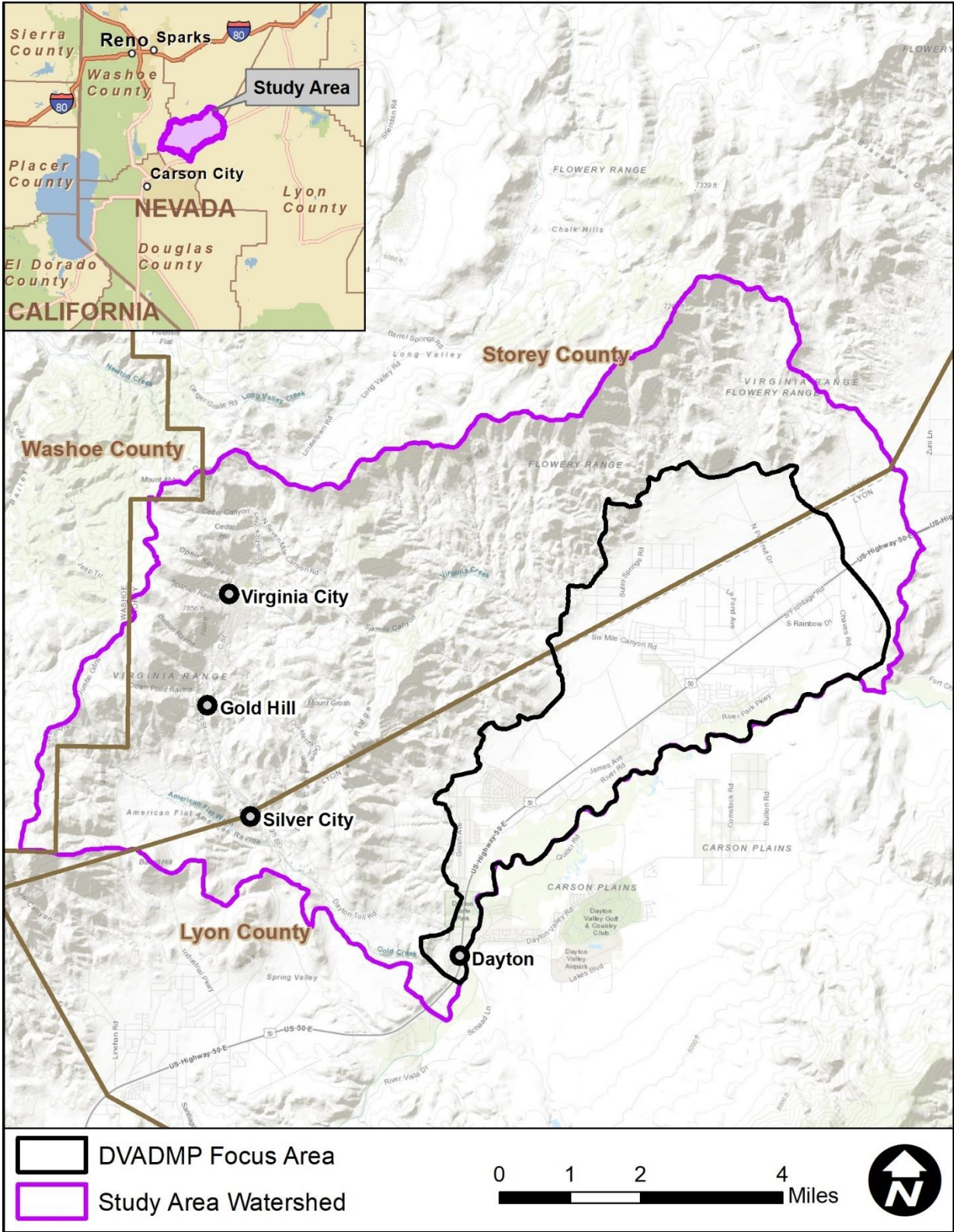


Figure 1-1. Dayton Valley ADMP focus area and contributing watershed

## **1.1 BACKGROUND AND RATIONALE**

Historically, governmental agencies have developed floodplain management measures such as floodplain ordinances, drainage ordinances, and development standards intended to mitigate the flood impacts of urbanization. If these measures are not adequate or are not adequately enforced, the consequences may include flooding of homes and businesses, displacement of existing natural flood flows, increased flood depths, and flooding of lands previously not in a floodplain. The adverse impacts of urbanization on drainage often include the following:

### **1.1.1 More Frequent Flooding**

As the land area within a watershed is converted from natural rangeland to rooftops and pavement, less rainfall infiltrates into the ground and more rainfall becomes runoff. This results in more frequent runoff events and increased nuisance flooding.

### **1.1.2 Larger Flood Peaks**

The change from natural pervious land surfaces to urbanized impervious surfaces also causes the size of floods to increase, as more runoff leaves the watershed. Urbanized watersheds generate not only large flood peaks, but also larger flood volumes and floods of longer duration, both of which increase flood damages. As flood peaks increase with urbanization, existing drainage structures become inadequate and have a greater risk of failure.

### **1.1.3 Scour and Erosion**

Because more land area is covered by homes, streets and landscaping as a watershed urbanizes, the natural sediment supply to streams is decreased, which causes floods to be more erosive. This erosion leads to loss of homes, property and farmland due to riverine bank erosion, scour damage to bridges, and adverse impacts to flood control facilities and natural river habitat.

### **1.1.4 Flow Diversion**

Unmanaged development can block natural flow paths, diverting runoff toward areas that were previously not flooded.

### **1.1.5 Flow Concentration**

Development in riverine or sheet flow floodplains blocks natural overland flow paths, concentrating runoff through narrower conveyance corridors. Flow concentration leads to higher flood peaks, higher flood velocities, and accelerated scour and erosion.

### **1.1.6 Expanded Floodplains**

Increased flood peaks and flow diversion increase flood water elevations and expand floodplain widths, inundating properties previously safe from flooding and expanding the number of homes and business at risk for future flood damage.

### **1.1.7 Reduced Surface Storage**

Reducing surface storage area by grading individual lots to reduce ponding areas or soggy soils, by erecting structures within former ponding and flood-prone areas, increases both the peak flow and the

volume of runoff generated by a given storm, and may also result in a loss of vegetation that further increases runoff rates.

#### **1.1.8 Decreased Ground Water Recharge**

Increased impervious surface area in an urbanized watershed inhibits ground water recharge and reduces soil moisture, with adverse consequences to long-term water supply, subsidence, and vegetation.

#### **1.1.9 Loss of Riparian Habitat**

Increased erosion due to increased flood peaks and reduced sediment supply leads to degraded habitat along river corridors, with adverse impacts to wildlife and public recreation.

Adherence to the development guidelines will lessen the adverse impacts of urbanization and decrease the cost of flooding for the public.

## **1.2 OBJECTIVES**

Communities develop drainage ordinances, policies, and standards with the intent to mitigate/minimize flooding impacts due to urbanization of a watershed. The overall objective of the ADMP development guidelines is to minimize the occurrence of losses, hazards, and conditions adversely affecting the public health, safety, and general welfare that occur due to flooding.

The general objectives of the development guidelines include the following:

- Enhance public safety by guiding development in the watershed to protect current and future residents from the effects of flooding.
- Reduce adverse drainage impacts due to development in the watershed by guiding activities of new construction.
- Guide future development in a manner consistent with the floodplain management objectives of Dayton Valley.

The following specific objectives were established to guide the development of criteria and the means of implementation:

- Develop development guidelines that have been tested on the actual environmental and development conditions within the study area.
- Develop development guidelines consistent and compatible with existing statutes, ordinances, and regulations.
- Limit the development guidelines to solely those necessary to address watershed-specific problems not adequately covered by existing Floodplain and/or Drainage Regulations.

The proposed Development guidelines for the Dayton Valley ADMP are consistent with the general and specific objectives set forth above.



## 2 DEVELOPMENT GUIDELINES

---

### 2.1 FLOODPLAINS AND SPECIAL CONSIDERATION AREAS

#### 2.1.1 General Considerations

Development guidelines for the following types of natural hazards are presented in this chapter:

- Section 2.2: Riverine Flooding
- Section 2.3: Distributary and Split Flow Areas
- Section 2.4: Alluvial Fans
- Section 2.5: Sheet Flow

For each hazard type, a definition and example photographs are provided, several key technical references are provided, followed by the hazard specific development guidelines. A generalized map of the flooding hazard types within the ADMP is shown in Figure 2-1. One of the flooding types shown in Figure 2-1 is Development Modified. These are areas where development has significantly altered the natural drainage pattern. These areas fall under County drainage standards and ordinance requirements.

For any specific development parcel in the ADMP study area, general information regarding flood hazards impacting the site can be identified using the ADMP FLO-2D modeling results. The FLO-2D modeling provides comprehensive, but generalized hazard information. It is highly recommended that individuals developing property in the study area also contact qualified registered professional engineers, geologists, and/or hydrologists for more site-specific information regarding the hazards at specific development parcels.

In case of conflict between the development guidelines and other policy or regulatory guidelines, the following two guiding principles for development should be considered to apply universally:

- **No Adverse Impact.** All development shall have no adverse impact on the pre-development hazard level on any adjacent property.
- **Existing Regulations Enforced.** All development shall comply with all existing local, state and federal floodplain regulations.

For the purposes of this document, development means any man-made change to property, including but not limited to buildings or other structures, mining, dredging, filling, grading, paving, excavation or drilling operations, or storage of materials or equipment.

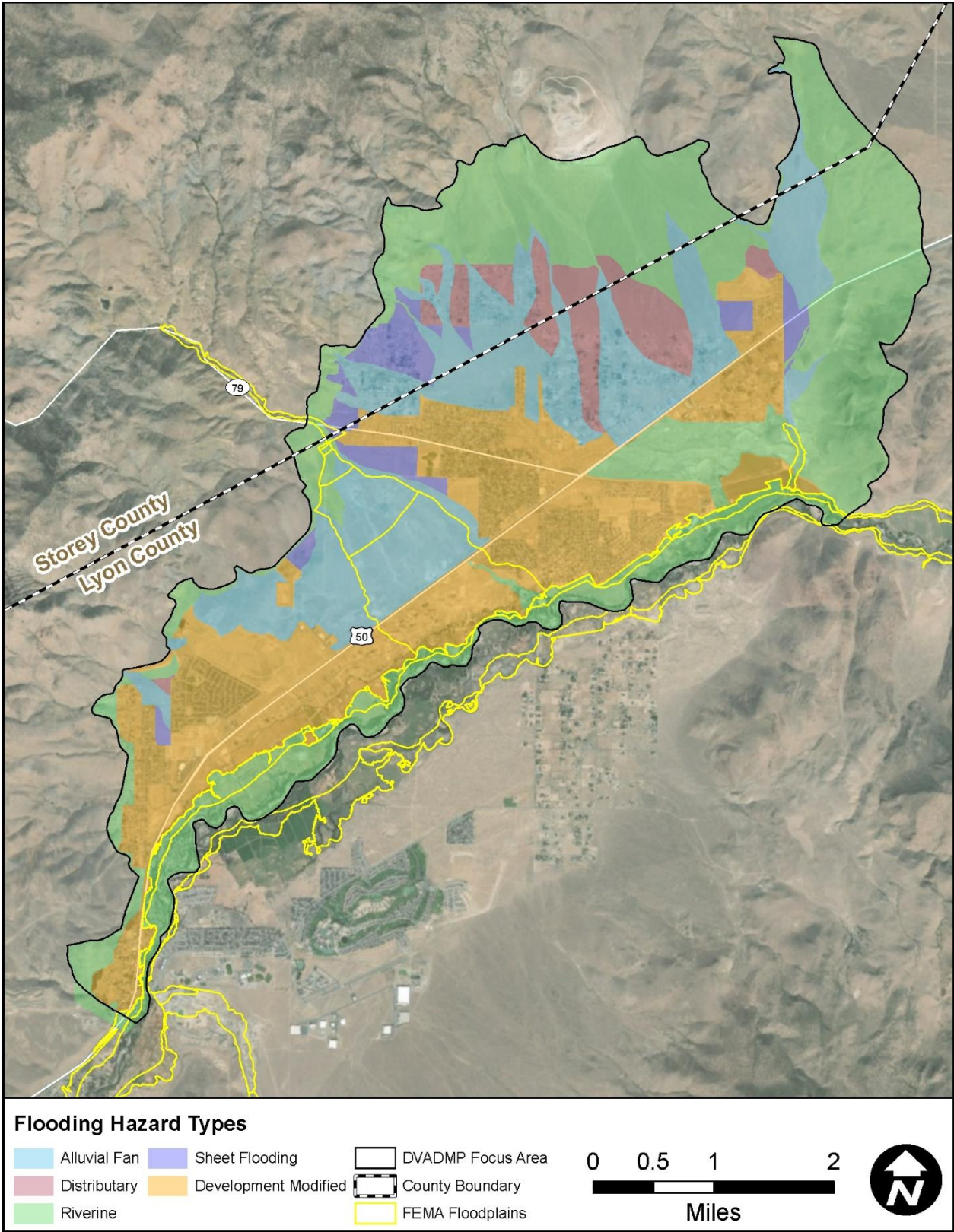


Figure 2-1. Flooding hazard types

## 2.2 RIVERINE FLOODING

Riverine flooding is generally the most common and is caused by channel bank overtopping when the flow capacity of channel is exceeded locally. The rising water levels generally originate from heavy high-intensity rainfall creating soil saturation and large runoff - locally or in upstream watershed areas. Riverine areas are characterized by a tributary (or dendritic) drainage pattern in which there are many contributing streams (analogous to the twigs of a tree), which are then joined together into the tributaries of the main river (the branches and the trunk of the tree, respectively). They develop where the river channel follows the slope of the terrain (Figure 2-2 and Figure 2-3).

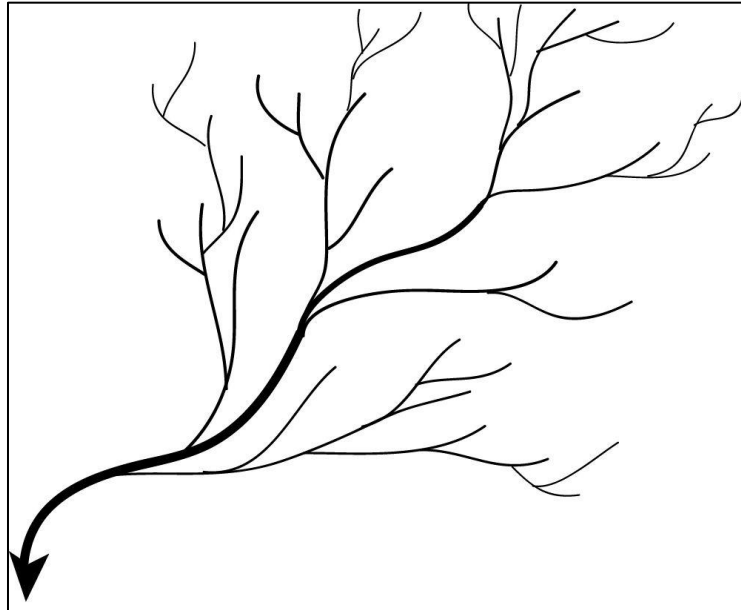


Figure 2-2. Example of tributary (dendric) drainage pattern

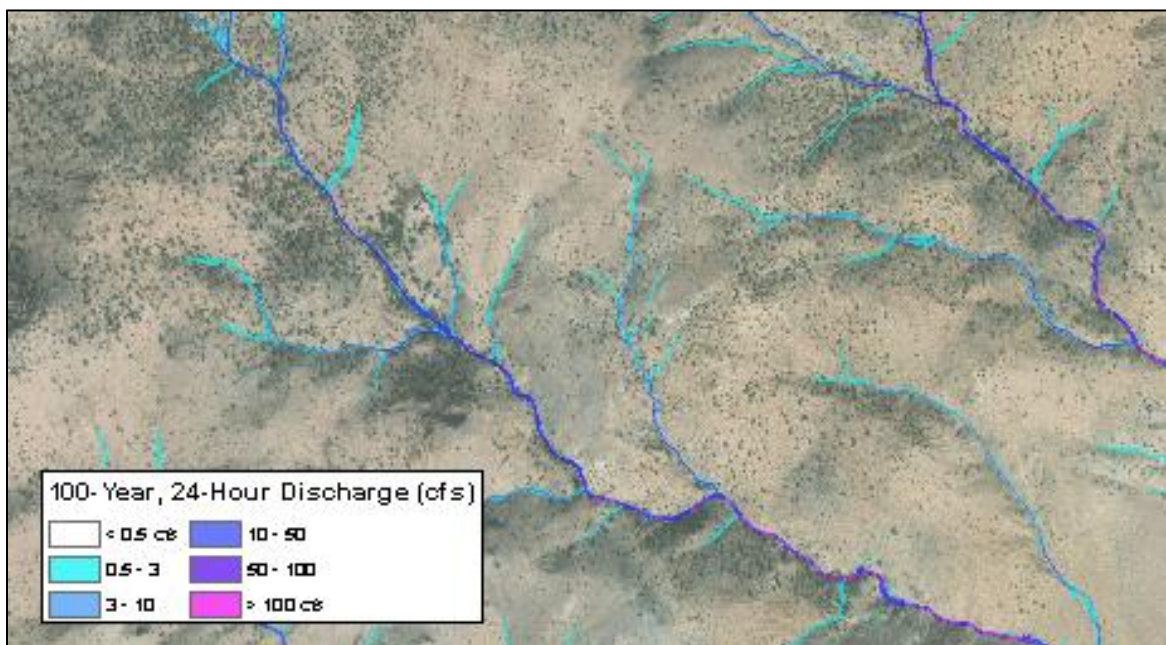


Figure 2-3. Example of riverine flooding in the ADMP study area

Areas defined by riverine flooding are shown in Figure 2-1. Future development within the riverine areas are subject to current County drainage standards and ordinances and/or FEMA guidelines for riverine flooding hazard mapping (for FEMA floodplain delineation).

## **2.3 DISTRIBUTARY AND SPLIT FLOW AREAS**

### **2.3.1 Hazard Description**

Distributary and split flow areas are unique flood hazards that occur throughout Dayton Valley, and which create difficulties for engineering design and floodplain management due to the uncertainty created by diverging flow paths (Figure 2-4). Development in split flow areas can cause changes to flow distributions and result in adverse impacts to downstream properties.

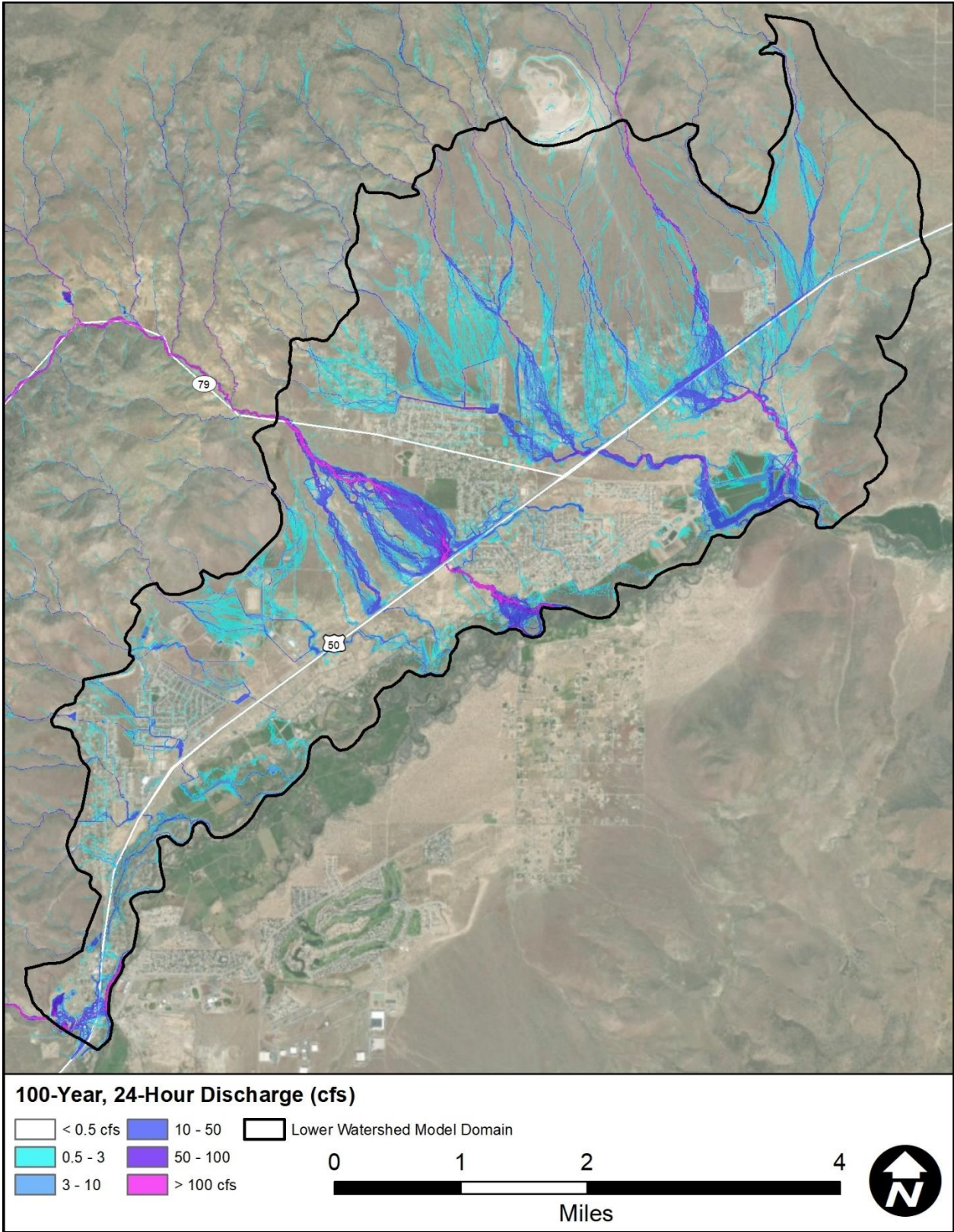


Figure 2-4. 100-Year, 24-Hour storm discharge results illustrating the highly distributary nature of the ADMP study area.

### 2.3.2 Definitions

**Split Flow.** A split flow is a physical condition where runoff divides and continues along hydraulically-separate flow paths. This can occur in areas where a wash or channels capacity is limited due to vegetation or debris blockage. Split flows also occur at drainage facilities such as detention/retention basins, at culverts that are overtopped or roadways that block or divert flows. Split flows may rejoin or remain separated permanently. A split flow is defined and identified by hydraulic analysis.

**Distributary Flow.** Distributary flow is a specific drainage pattern in which defined channels divide, such that the number channels increase in the downstream direction. Distributary flow areas have channels which split and rejoin in a complex pattern. The number of channel forks commonly exceeds the number of channel confluences, creating a *distributary*, rather than tributary drainage pattern. The separate channels downstream of a channel fork may have terraces independent of other channels within the distributary flow system. A distributary channel is a stream branch flowing away from the main stream and not rejoining it. Identifying characteristics of distributary flow areas include the following:

- Low, but distinguishable topographic relief perpendicular to the primary flow direction.
- Topographic relief sufficient to create isolated islands during flood conditions within the overall floodplain.
- Channels which divide in the downstream direction so that the number of flow paths conveying floodwaters increases in the downstream direction.
- An increase in vegetative density along flow lines, with more uniform upland vegetation types found between flow lines, extending laterally over an expansive area.
- Soils units mapped by the Soil Conservation Service as alluvial fan terraces, inactive alluvial fans, or alluvial fans.
- During large floods, the distribution of flow between various existing distributary flow paths may not be predictable. However, flow lines themselves are relatively stable, especially during smaller floods.
- Large floods may cause isolated or widespread bank erosion, or sediment deposition within the channel which changes channel capacity or may change overbank conveyance.

**Alluvial Fans.** Distributary flow areas are frequently found on alluvial fans, but distributary flow can occur on a variety of landforms that are not alluvial fans. Alluvial fan flood hazards are described in Section 2.4below.

**Sheet Flow.** Some, but not all, distributary flow areas convey significant components of flooding by sheet flooding. Sheet flow areas are described in Section 2.5below.

### 2.3.3 Technical References:

- Federal Emergency Management Agency (FEMA), 2003, Guidelines and Specifications for Flood Hazard Mapping Partners – Appendix E: Guidance for Shallow Flooding Analyses and Mapping. Available at: [www.fema.gov/mit/tsd/dl\\_cgs.htm](http://www.fema.gov/mit/tsd/dl_cgs.htm).
- Arizona Department of Water Resources (ADWR). State Standards for Floodplain Management: <http://www.azwater.gov/dwr/Content/Publications/default.htm>

- (SS4-95) Standard for Development Within Sheet Flow Areas
- Hjalmarson, H.W., and S.P. Kemna. "Flood Hazards of Distributary-Flow Areas in Southwestern Arizona." USGS Water-Resources Investigation. 1991. 91-4171.

### 2.3.4 Development guidelines for Distributary & Split Flow Areas

***Policy DFA 1: Flow Concentration.*** Development in distributary or split flow areas should not concentrate flow or eliminate flow paths that change the flow rate or distribution on adjacent parcels.

***Policy DFOA 2: Drainage Master Plan.*** A drainage master plan is required for any new subdivision (5 or more parcels) located in distributary or split flow areas. The drainage master plan should demonstrate that the roadway network that serves the property has acceptable impact to drainage patterns and runoff concentration. Subdivision drainage design in the distributary/ split flow areas shall focus on limiting the concentration of flows. Where flows are concentrated, appropriate scour protection shall be applied to the channel reach. Concentrated flows shall return to the natural distributary flow condition prior to exiting the property.

***Policy DFA 3: Finished Floor Elevation.*** The finished floors of all new or substantially improved habitable structures must be elevated above the flow depth as determined from the ADMP flow depth grids.

***Policy DFA 3: Minimum Flow Split Discharge.*** If a hydraulic rating is used to determine flow distributary at a flow split, no less than 50% of the 100-year discharge upstream of the bifurcation should be used on any single channel downstream, unless a publicly maintained engineered structure controls the flow distribution. If no hydraulic modeling is provided, the full 100-year discharge upstream of the split should be used on all downstream channels for drainage design.

## 2.4 ALLUVIAL FANS

### 2.4.1 Hazard Description

Alluvial fans are gently sloped, fan-shaped landforms created by the deposition of sediment eroded from an upstream watershed (Figure 2-5). Active alluvial fans are unique flood hazards in that they experience not only flash flooding and erosion common to all arid region streams, but they can also experience dramatic shifts in channel location that make floodplain management and flood hazard mitigation challenging.

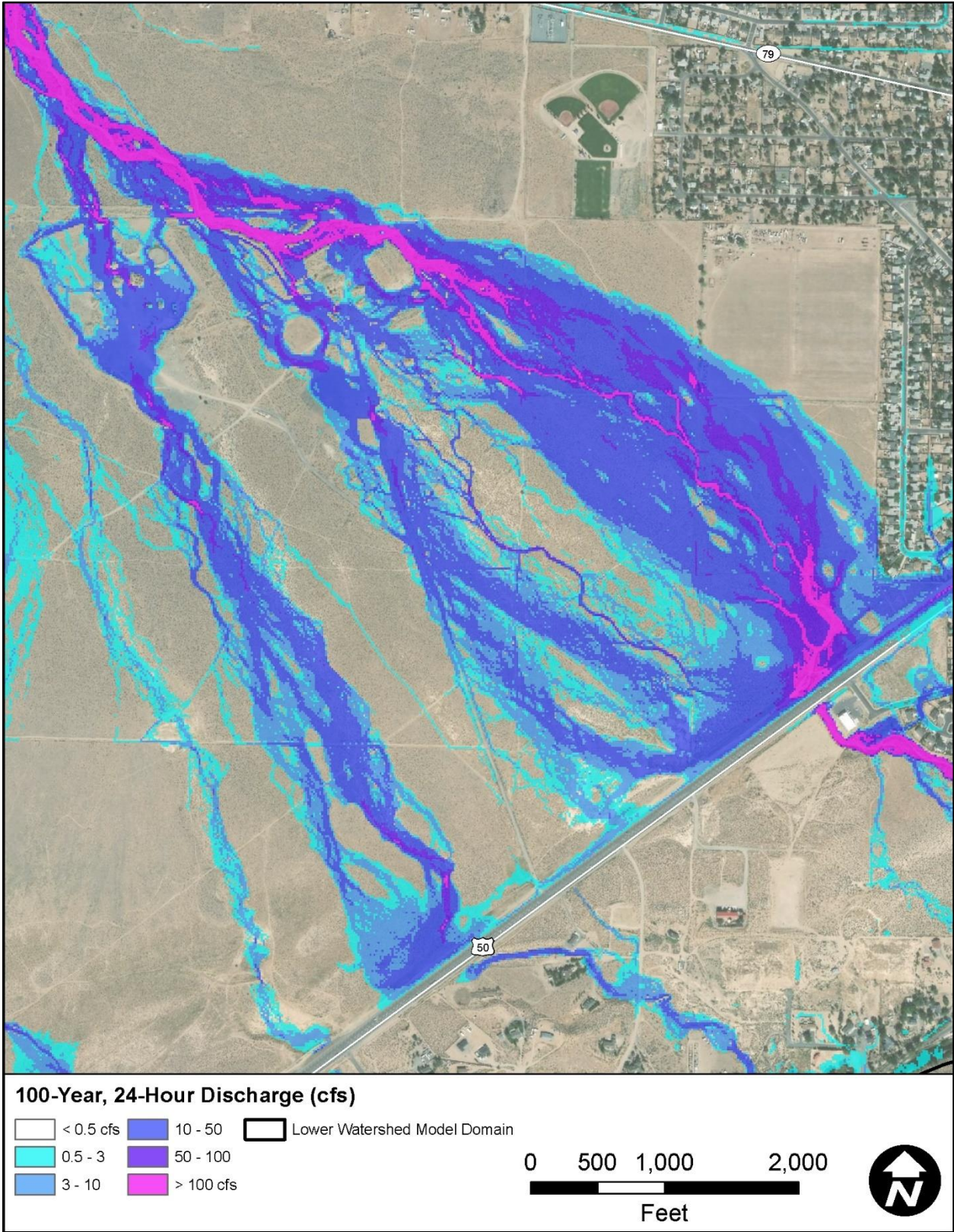


Figure 2-5. Sixmile Canyon is one of several active alluvial fan landforms within the ADMP study area.

## 2.4.2 Definitions

- **Alluvial Fan** means a sedimentary deposit located at a topographic break, or sudden loss of lateral confinement, such as the base of a mountain, escarpment, or valley side, is composed of streamflow and/or debris flow sediments, and that has the shape of a fan either fully or partially extended. Alluvial fans may be active or inactive. The development guidelines described in below apply primarily to active alluvial fans.
- **Alluvial Fan Flooding** occurs only on alluvial fans and is characterized by flow path uncertainty so great that this uncertainty cannot be set aside in realistic assessments of flood risk or in the reliable mitigation of the hazard. The presence of alluvial fan flooding is indicated by three key criteria:
  - Flow path uncertainty below the hydrographic apex
  - Abrupt deposition and ensuing erosion of sediment as a stream or debris flow loses its competence to carry material eroded from a steeper, upstream source
  - An environment where the combination of sediment availability, slope and topography creates an ultra-hazardous condition for which elevation on fill will not reliably mitigate the risk.
- **Apex** means a point on an alluvial fan below which the flow of the major stream that formed the fan becomes unpredictable and alluvial fan flooding may occur.

## 2.4.3 Types of Alluvial Fans

A variety of terms are commonly used to describe alluvial fans. The terms are not synonyms, as each type of fan is subject different types of flood hazards. More detailed information on these can be found in the references listed below.

- **Active Alluvial Fan.** Those locations where flooding, erosion, and/or deposition have occurred on the landform such as an alluvial fan in relatively recent time (the historic period), and probably will continue to occur on that part of the landform.
- **Alluvial Plain.** A level or gently sloping tract or a slightly undulating land surface produced by extensive deposition of alluvium, usually adjacent to a river that periodically overflows its banks; it may be situated on a flood plain, a delta, or an alluvial fan.
- **Bajada.** A broad, continuous alluvial slope or gently inclined detritus surface, extending along and from the base of a mountain range out into and around an inland basin, formed by the lateral coalescence of a series of separate but confluent alluvial fans, and having an undulating character due to the convexities of the component fans. A bajada is a surface of deposition, as contrasted with a pediment (a surface of erosion that resembles a bajada in surface form), and its top often merges with a pediment.
- **Inactive Fan.** Those locations where flooding, erosion, and/or deposition have not occurred on a landform such as an alluvial fan in relatively recent time, and probably will not occur on that part of the landform. On inactive alluvial fans flood water typically is conveyed along incised channels and adjacent stable land.

- **Pediment** A broad, flat or gently sloping, rock-floored erosion surface or plain of low relief, typically developed by sub aerial agents (including running water) in an arid or semiarid region at the base of an abrupt and receding mountain front or plateau escarpment, and underlain by bedrock (occasionally by older alluvial deposits) that may be bare but more often partly mantled with a thin and discontinuous veneer of alluvium derived from the upland masses and in transit across the surface. The longitudinal profile of a pediment is normally slightly concave upward, and its outward form may resemble a bajada (which continues the forward inclination of a pediment).
- **Piedmont.** Lying or formed at the base of a mountain or mountain range; e.g. a piedmont terrace or a piedmont pediment. (n.) An area, plain, slope, glacier, or other feature at the base of a mountain; e.g. a foothill or a bajada.

#### 2.4.4 Technical References:

- Federal Emergency Management Agency (FEMA), 2003, Guidelines and Specifications for Flood Hazard Mapping Partners –Appendix G: Guidance for Alluvial Fan Flooding Analyses and Mapping. Available at: [www.fema.gov/mit/tsd/dl\\_cgs.htm](http://www.fema.gov/mit/tsd/dl_cgs.htm).
- National Research Council, 1996, Alluvial Fan Flooding, National Academy Press, Washington, D.C. Available for purchase at: <http://www.nap.edu/>
- Arizona Department of Water Resources (ADWR). State Standards for Floodplain Management: <http://www.azwater.gov/AzDWR/SurfaceWater/FloodManagement/StateStandards.htm>
  - (SS4-95) Standard for Development Within Sheet Flow Areas

#### 2.4.5 Development guidelines for Alluvial Fans

***Policy AF 1: Floodplain Delineation.*** Any new FEMA floodplain delineation within the ADMP alluvial fan areas must be completed to FEMA standards. For subdivisions, the alluvial fan floodplain delineation must extend from a point above the apex where no flow path uncertainty exists downstream to the piedmont axial stream (Carson River). In most cases, the floodplain delineation must be submitted to and approved by FEMA prior to the issuance of building permits. For single lot residential development, the floodplain delineation may be limited to the building envelope and does not need to be submitted to FEMA. For all delineations, lateral tie-in upstream and downstream to effective (approved) floodplain delineations and to CLOMR/LOMR delineations that reflect structural flood control measures. Floodplain delineations on alluvial fans shall be completed using the procedures described in FEMA Guidelines.

***Policy AF 2: Whole Fan Solution Preferred.*** Identification of active alluvial fans, control of their apex, and conveyance of flow through the entire fan will be necessary for development within active alluvial fan areas. Dayton Valley has a strong preference of whole fan solutions that control the apex of the active alluvial fans, provides for flood conveyance through the entire fan (a regional solution), and outfalls into a regional drainageway sized to convey the 100-year discharge.

***Six Mile Canyon Alluvial Fan.*** The ADMP two-dimensional hydraulic modeling and sedimentation engineering results for the Six Mile Canyon alluvial fan indicate flow depths and

velocities, and high sediment transport rates pose a significant risk across many areas of the landform. Elevating new development on fill may not be sufficient to mitigate the hazard. A whole fan solution is preferred for Six Mile Canyon.

***Policy AF 3: Non-Structural Flood Control.*** Special consideration should be given to avoiding development within flood prone areas on active alluvial fans, accommodating the unstable and indeterminate flow associated with the alluvial fans, and maintaining existing sediment transport conditions. Consideration should be given to protect the major conveyance channels, and associated banks and vegetation.

***Policy AF 4: Flowpath Uncertainty Modeling.*** An avulsion is the process by which flow is diverted out of an established channel into a new course on the adjacent floodplain<sup>2</sup>. Avulsions divert flow from one channel into another, leading to a total or partial abandonment of the previous channel<sup>3</sup>, or may involve simple flowpath shifts in a braided or sheet flooding system. Avulsions are commonly associated with alluvial fan flooding, but are also known to occur on riverine systems and river deltas

The occurrence of avulsions is what makes an alluvial fan “active.” Avulsions give the alluvial fan the ability to distribute water and sediment over the surface of the landform, which results in the radial “fan” shape. Avulsions influence flood hazards on alluvial fan landforms by changing the location, concentration and severity of flooding on the fan surface. That is, an area not previously inundated by flooding (or inundated only by shallow flow) may in a subsequent flood become the locus of flood inundation, sediment deposition, and/or erosion. If an alluvial fan has no risk of avulsion, flood hazard delineation and mitigation become much simpler engineering problems, consisting only of modeling two-dimensional flow and/or normal riverine hydraulic and sedimentation issues.

The occurrence of major avulsions in an alluvial fan drainage system introduces the following complications into an engineering analysis of the flood hazard:

- Uncertain and changing flowpath locations, during and between floods
- Continually changing channel and overbank flowpath topography
- Inundation and/or sedimentation hazards in previously un-flooded areas
- Uncertain and changing flow rate distribution for areas downstream of avulsions
- Uncertain and changing watershed boundaries for areas downstream of avulsions
- Aggrading, net depositional land surfaces and channels with diminishing capacity
- Unsteady, rapidly-varied flow conditions
- High rates of infiltration and flow attenuation across the fan surface

The Dayton Valley ADMP included a flowpath uncertainty analysis which resulted in the development of flowpath uncertainty 2-dimensional models (see ADMP Technical Support Data Notebook Chapter 4). Future development that occurs on an active alluvial fan shall account for potential flowpath uncertainty by computing offsite drainage using the highest hydraulic output from the following ADMP FLO-2D models:

- Existing Conditions

---

<sup>2</sup> Slingerland, R and Smith, N.D., 2004, River Avulsions and Their Deposits, Annual Review of Earth and Planetary Science, Vol. 32:257-285.

<sup>3</sup> Field, John, 2001, “Channel avulsion on alluvial fans in southern Arizona,” Geomorphology, Vol. 37, p. 93-104.

- Flowpath Uncertainty Scenario 1
- Flowpath Uncertainty Scenario 2

In addition to considering flowpath uncertainty, future development that occurs on an active alluvial fan shall elevate the lowest finished floor elevation of habitable structures to be a minimum of two feet above the 100-year, 24-hour flow depth as determined from the ADMP depth grids to account for potential sedimentation.

## **2.5 SHEET FLOODING**

### **2.5.1 Hazard Description**

Sheet flooding is a type of surface water runoff that occurs on broad, unconfined floodplains with low lateral relief (Figure 2-6). Sheet flooding can occur in urban, rural, and natural areas. Because sheet flooding often occurs in areas that lack defined stream channels, identification of sheet flood areas can be difficult.

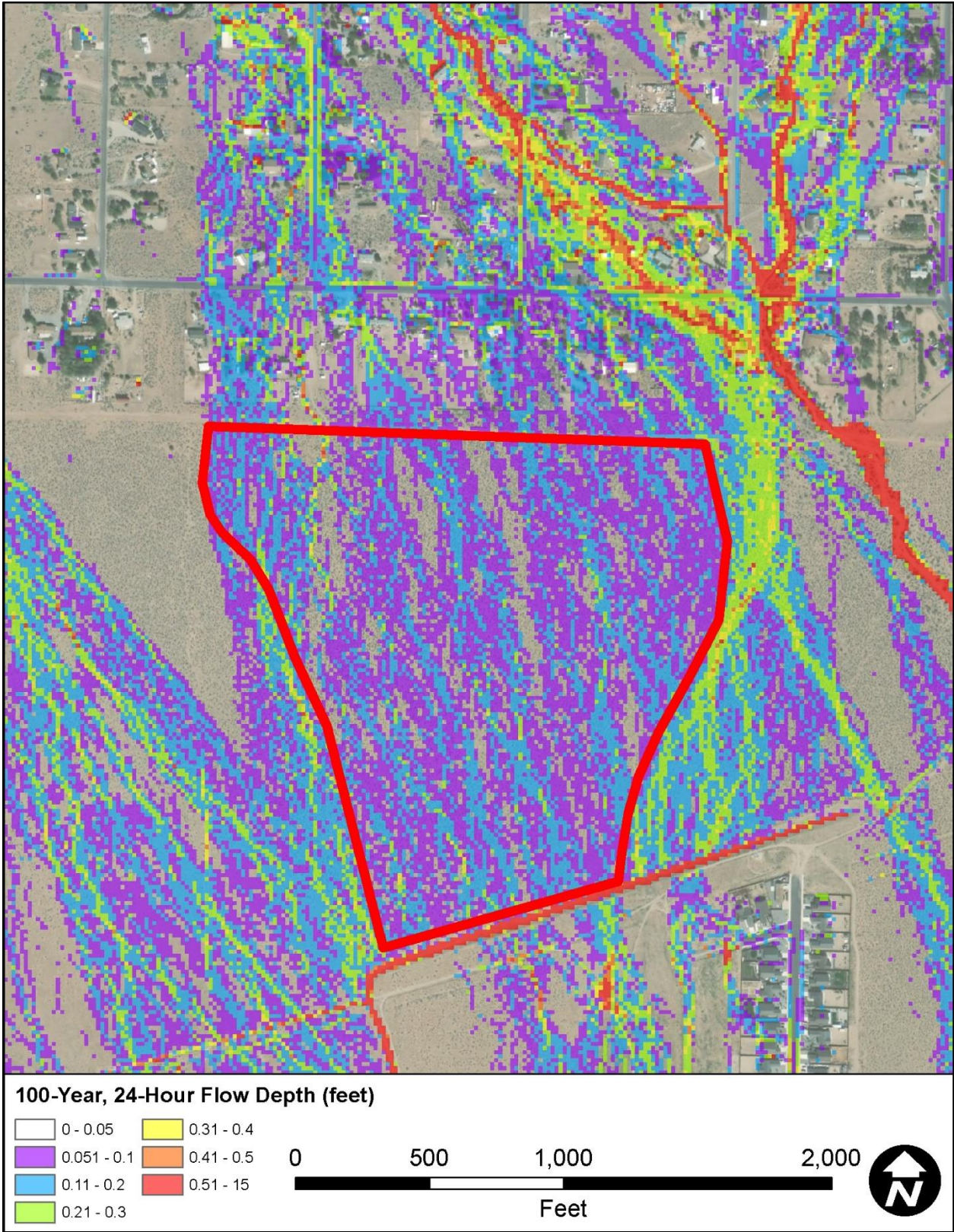


Figure 2-6. Example of sheet flooding (red outline) within the ADMP study area.

### 2.5.2 Definitions

Sheet flow is a loosely defined term. In general, the term "sheet flow" may refer to any form of unconfined runoff that occurs over a broad, expansive area. This broad definition of sheet flow incorporates several more narrowly defined flow types, including natural (classic) sheet flow, urban sheet flow, agricultural sheet flow, overland flow, perched flow, anastomosing flow, and distributary flow. The variety of terms used for sheet flow probably reflects the variety of flow types that occur within specific geographic regions of the state. For this study, the term "sheet flow" will be used generically, to include all types of sheet flow that occur in Dayton Valley.

In general, sheet flooding in Dayton Valley has the following characteristics:

- The primary identifying characteristic of sheet flow is that a significant part of flood water is not conveyed in a single, well-defined channel. Flood flow is conveyed over the unchanneled land surface.
- Water moving over a smooth stable surface does not move as a uniform film. If the surface is broad, the sheet differentiates into parallel streams of greater depth and relatively rapid flow, separated by shallower bands of relatively sluggish flow; and at the same time, both streams and intervening bands differentiate into series of transverse waves which move forward more rapidly than the body of the undifferentiated sheet.
- Sheet flow over poorly vegetated surfaces often has the ability to transport large sediment particles relatively large distances over low slopes without significant reduction in sediment diameter, angularity, or degree of sorting, such as may be considered typical of most well-defined streams.
- Sheet flooding has markedly different hydraulic characteristics for sediment laden and sediment deprived flows. Sheet flooding may not have gradually varied or steady flow and may have a strong two-dimensional character.
- Significant loss of flow volume may occur during sheet flooding due to infiltration and other abstractions.
- Sheet flow often enters a larger channel or drainage system that intersects its flow, but occasionally dissipates due to infiltration or other loss mechanisms before ever reaching a channel.

### 2.5.3 Types of Sheet Flow

- Natural sheet flow occurs in undeveloped areas and consists of flowing water characterized by a tendency to spread widely in relatively shallow sheets over gently sloping areas with low topographic relief which lack defined drainage systems.
- Urban sheet flow occurs where development has obscured natural drainage patterns or where urban drainage facilities are severely undersized. Urban sheet flow areas differ from natural sheet flow areas in that the identifying soil and vegetative characteristics may be obscured by development. Urban sheet flow areas are usually identified from historic records of unconfined flooding. Urban sheet flow areas occasionally may be identified by detailed topographic maps that show low relief in known flooding areas.
- Agricultural sheet flow occurs on land surfaces that have been graded or flattened for agricultural use. Lack of topographic variation within the field areas creates sheet flow

conditions. Agricultural sheet flow areas differ from natural sheet flow areas in that soil and vegetative identifying characteristics may be obscured by regrading or leveling for irrigation and crop development. Agricultural sheet flow areas may be identified from pre-development photographic or topographic data, or from historic records of flooding.

- Overland flow is the movement of water resulting from rainfall on hill slopes in upper watershed areas prior to entering defined channels. The development guidelines in this document should not be applied to overland flow areas.
- Perched flow originates along well-defined channels where overbank flooding becomes separated from the main flow path and develops hydraulic characteristics unique from the main channel. Perched flow is not considered sheet flow, unless it meets other characteristics described above.
- Braided flow occurs where flow within a well-defined channel or floodplain is divided into separate flow paths created by shifting patterns of sediment deposition. Braided flow is not a form of sheet flow.

**2.5.4 Technical References:**

- Federal Emergency Management Agency (FEMA), 2003, Guidelines and Specifications for Flood Hazard Mapping Partners –Appendix E: Guidance for Shallow Flooding Analyses and Mapping. Available at: [www.fema.gov/library](http://www.fema.gov/library).
- Arizona Department of Water Resources (ADWR). State Standards for Floodplain Management: <http://www.azwater.gov/dwr/Content/Publications/default.htm>
  - (SS4-95) Standard for Development Within Sheet Flow Areas

**2.5.5 Development Guidelines for Sheet Flow Areas**

***Policy SF 1: Single Lot Site Conveyance.*** For single-lot development in the sheet flow areas, flows should not be concentrated beyond a typical shallow swale around the structure. Swales shall daylight and broaden to the natural flow conditions on the downstream side of the proposed structure.

***Policy SF 2: Subdivision Flow Concentration.*** Drainage design in sheet flow areas shall limit the concentration of flows and preserve overland flow paths. Where flows are concentrated or channelized, appropriate scour and erosion protection shall be applied to the channelized areas. Concentrated flows shall be returned to the natural flow condition prior to exiting the property. Note that returning channelized flow to a natural sheet flow condition without adverse impacts to downstream properties is difficult to achieve and is therefore not recommended.

***Policy SF 3: Drainage Master Plan.*** A drainage master plan should be developed for any subdivision located in a sheet flow area. Among other requirements, the drainage master plan should demonstrate that the roadway network that serves the divided property has no adverse impact to drainage patterns and runoff concentration. In general, the street layout should be designed to cross perpendicular to the primary flow direction to prevent capture and diversion of overland flow.

***Policy SF 4: Finished Floor Elevation.*** Elevate the lowest finished floor elevation of habitable structures to be a minimum of one foot above the 100-year, 24-hour flow depth as determined from the ADMP depth grids. Note that significant backwater conditions may occur in sheet flow areas upstream of roadways with drainage structures that are not sized for the 100-year flood. Flood depths resulting from these backwater conditions may exceed depths indicated by local geomorphology or field conditions. In such areas, the finish floor elevations should be elevated at least 0.5 foot above the elevation of the roadway which creates the backwater condition. For subdivisions planned in sheet flow areas, finished floor elevations should be established by detailed engineering analyses, which may additionally require two-dimensional modeling.

***Policy SF 5: Structure Alignment.*** Homes in sheet flow areas should be aligned parallel to the primary flow direction. Streets in sheet flow areas should be oriented perpendicular to the primary flow direction.

***Policy SF 6: Development Density.*** Zoning densities higher than 1 residence per acre (RAC) are not recommended in designated sheet flow areas, unless drainage studies that analyze potential concentration of flow and downstream impacts are completed or regional flood control facilities are constructed. Development restrictions in low density sheet flow areas should include restrictions on perimeter fencing and limitation of site grading to specific building envelopes.