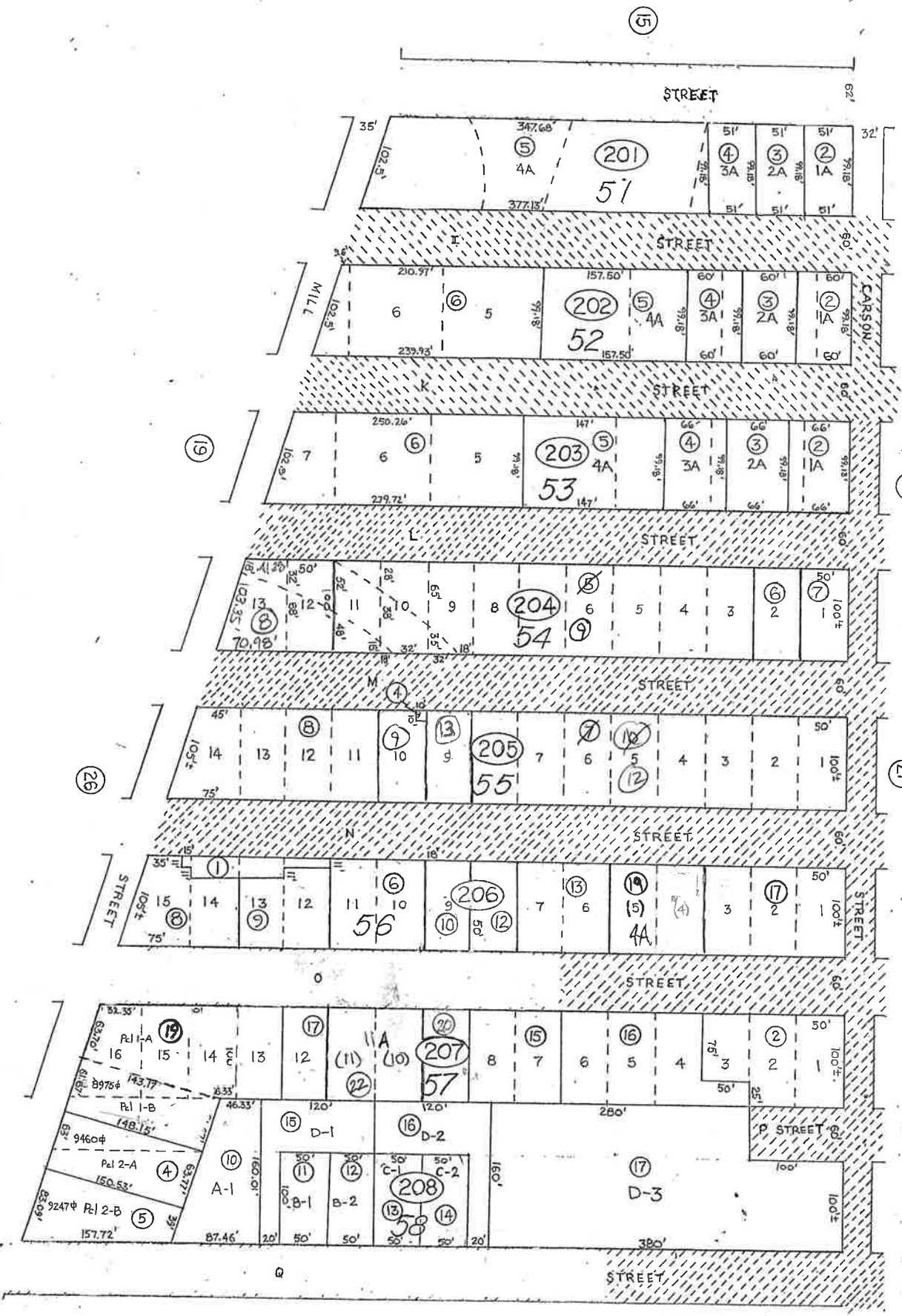


Por. of NE 4 of Sec. 29  
T17N, R21E, M.D.&M



Revised-Mar 2004--53

STOREY COUNTY, NEVADA  
This map is prepared for the use of the Storey County Assessor for assessment and illustrative purposes ONLY. It does not represent a survey. No liability is assumed as to the sufficiency or accuracy of the data delineated herein.

Virginia City  
STOREY COUNTY

Page 31  
sits here



(51)

01-20