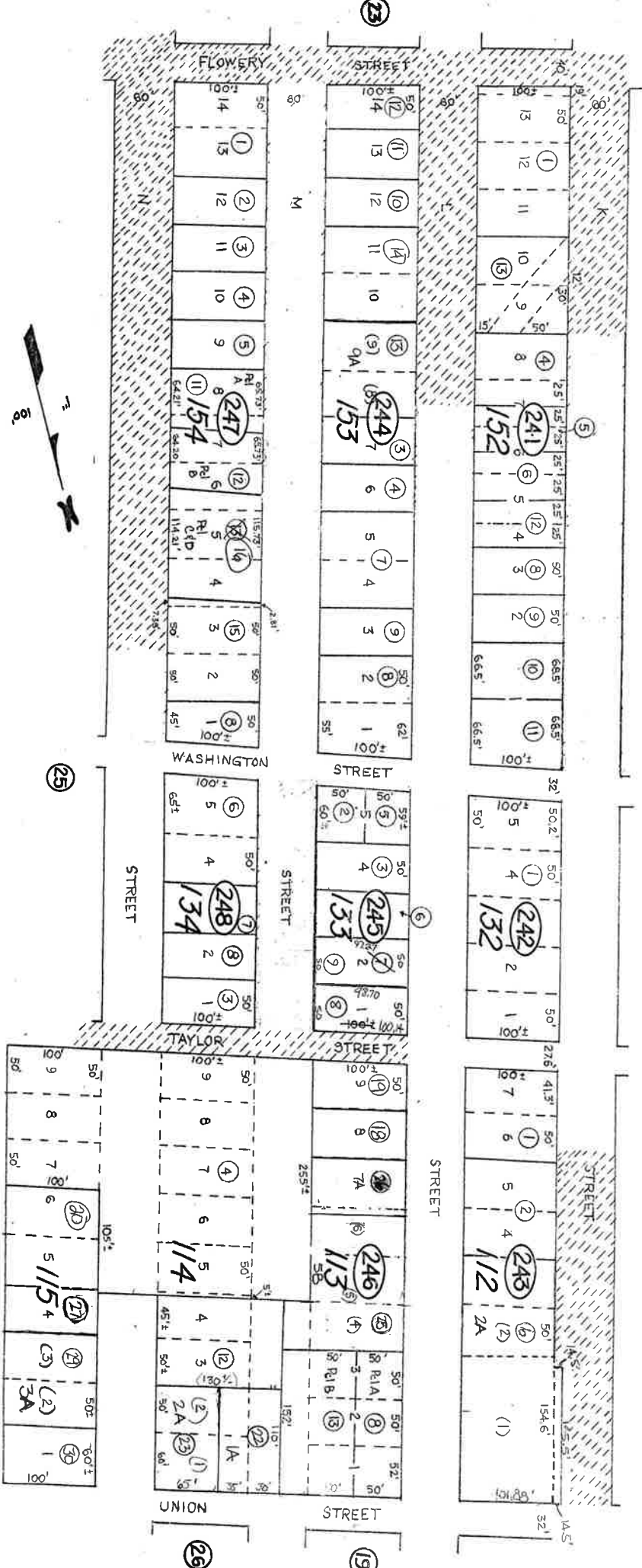


Por. of W²SE⁴ of Sec. 29
T17N, R21E, M.D.B.&M.



Revised Jan. 2005 / JS
REV/DCKS/JUNE 92 /79

STORNEY COUNTY, NEVADA

This map is prepared for the use of the Stoney County Assessor for assessment and illustrative purposes ONLY. It does not represent a survey. No liability is assumed as to the sufficiency or accuracy of the data delineated herein.

Virginia City