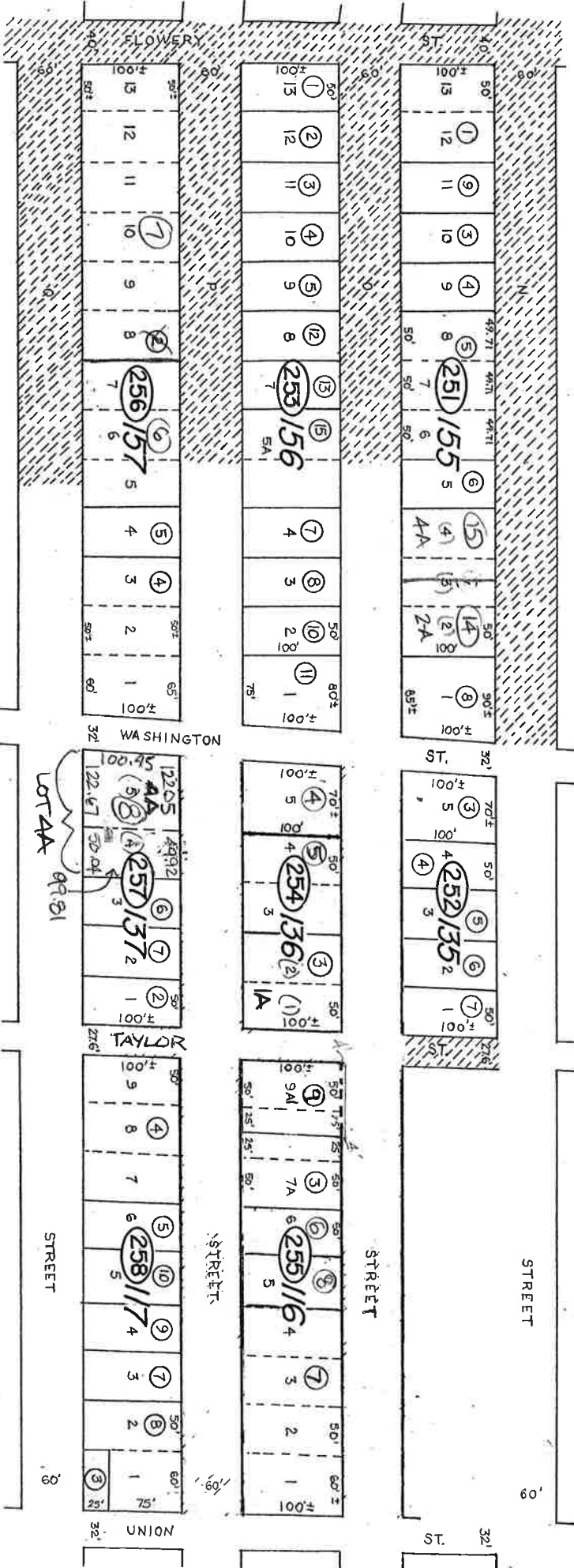
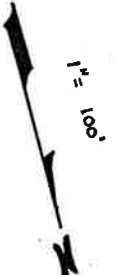


For NE 4 SE 4, Sec 29  
T7N, R21E, MDB&M.



(31)

(24)

(32)

1-259-01 FLOATING PARCEL  
EAST OF WASHINGTON  
(MORRELL TRACT)

Revised Feb 2005 / 23  
REV/DMS/OCT 02/DA

STOREY COUNTY, NEVADA  
This map is prepared for the use of the Storey County  
Assessor for assessment and illustrative purposes ONLY.  
It does not represent a survey. No liability is assumed as to the  
sufficiency or accuracy of the data delineated herein.

Virginia City  
STOREY COUNTY