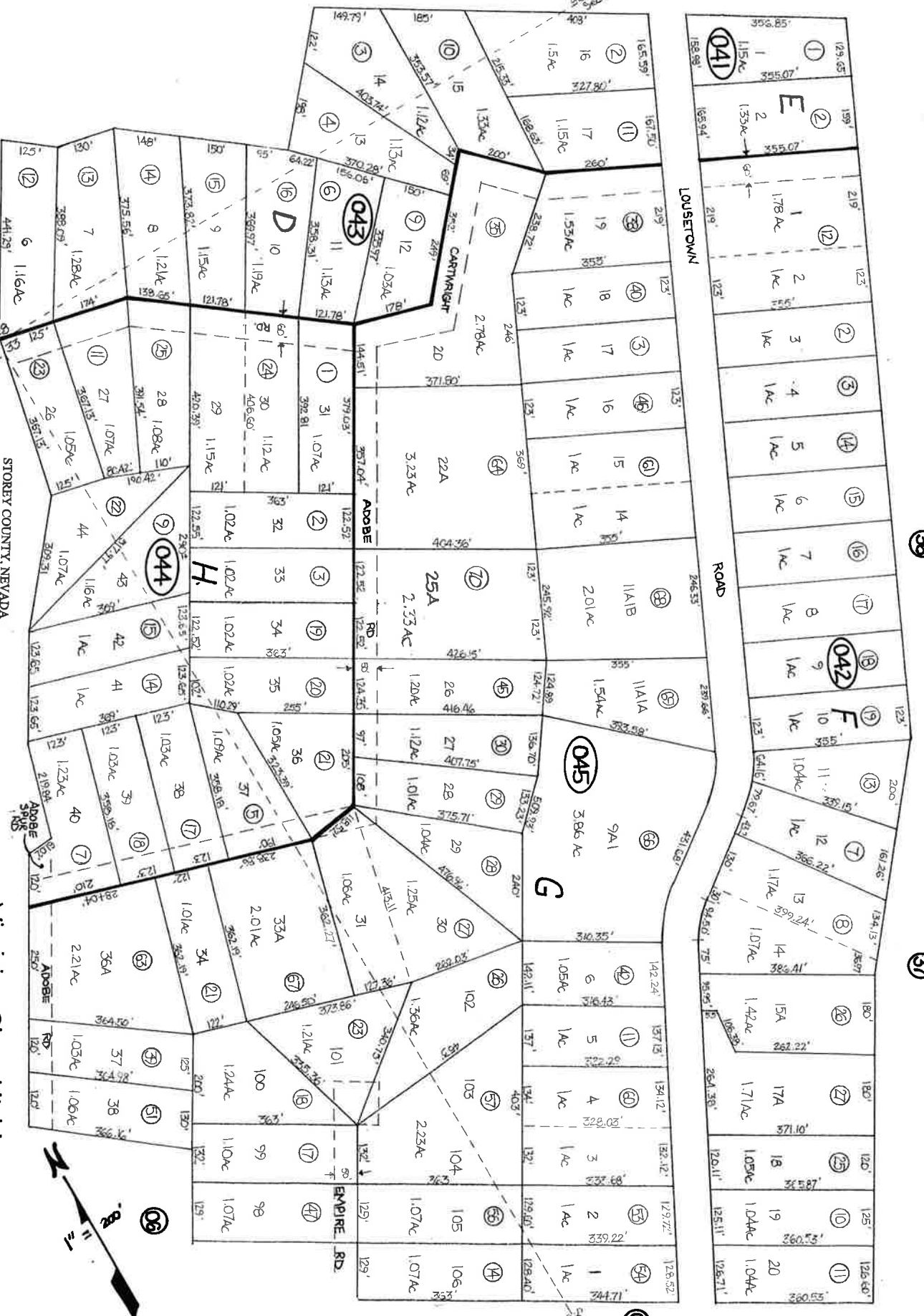


A Portion Sec. 32, 33, & 28, T18N, R21E



REV. MAR 2006-33

STOREY COUNTY, NEVADA
 This map is prepared for the use of the Storey County Assessor for assessment and illustrative purposes ONLY. It does not represent a survey. No liability is assumed as to the sufficiency or accuracy of the data administered hereon.

Virginia City Highlands Unit 1
 STOREY COUNTY