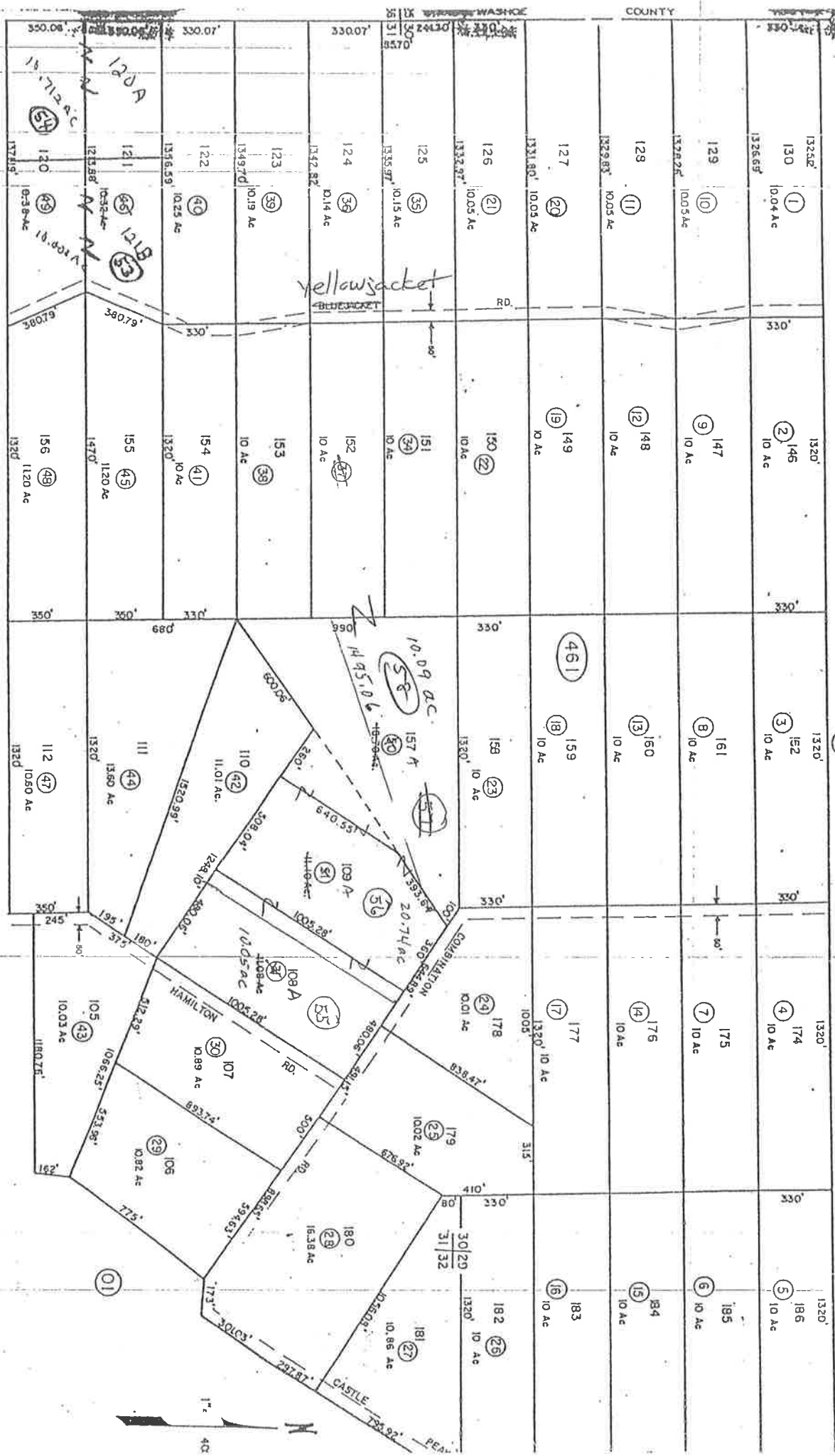


Portions in Sec. 29, 30, 31, & 32  
T18N, R21E, M.D.B. & M.

03-46

05-46



REV/DOAS/JUNE 92/TKG  
REV/DOAS/DEC 98/RAH  
REV/DOAS/M/A  
DOT/DOAS/OCT 19/KG

NOTE: This plat is for assessment use only and does not represent a survey. No liability is assumed as to the accuracy of the data delineated hereon. Use of this plat for other than assessment purposes is forbidden unless approved by the Dept. of Taxation, Division of Assessment Standards.

HIGHLAND RANCHES  
STOREY COUNTY